

CPSF3L Polyclonal Antibody

Catalog No. E-AB-61217

Note: Centrifuge before opening to ensure complete recovery of vial contents.

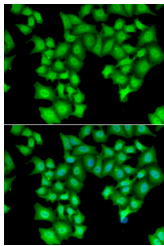
Description

Reactivity	Human,Mouse,Rat
Immunogen	Recombinant fusion protein of human CPSF3L (NP_060341.2).
Host	Rabbit
Isotype	IgG
Purification	Affinity purification
Conjugation	Unconjugated
Buffer	PBS with 0.02% sodium azide, 50% glycerol, pH7.3.

Applications Recommended Dilution

IF 1:10-1:100

Data



Immunofluorescence analysis of HeLa cells using
CPSF3L Polyclonal Antibody

Preparation & Storage

Storage Store at -20°C. Avoid freeze / thaw cycles.

Background

The Integrator complex contains at least 12 subunits and associates with the C-terminal domain of RNA polymerase II large subunit and mediates the 3-prime end processing of small nuclear RNAs U1 and U2. INTS11, or CPSF3L, is the catalytic subunit of the Integrator complex.

For Research Use Only