

**Note:** Centrifuge before opening to ensure complete recovery of vial contents.

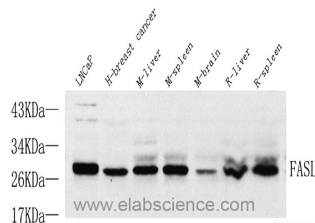
## Description

<b>Reactivity</b>	Human, Mouse, Rat
<b>Immunogen</b>	KLH conjugated Synthetic peptide corresponding to Mouse FASL
<b>Host</b>	Rabbit
<b>Isotype</b>	IgG
<b>Purification</b>	Affinity purification
<b>Conjugation</b>	Unconjugated
<b>Formulation</b>	PBS with 0.02% sodium azide, 1% protective protein and 50% glycerol, pH7.4

## Applications Recommended Dilution

<b>WB</b>	1:500-1:2000
-----------	--------------

## Data



Western Blot analysis of various samples using FASLG Polyclonal Antibody at dilution of 1:1000.

**Observed Mw:31kDa**  
**Calculated Mw:31kDa**

## Preparation & Storage

**Storage** Store at -20°C. Avoid freeze / thaw cycles.

## Background

The protein encoded by this gene is the ligand for FAS. Both are transmembrane proteins. Interaction of FAS with this ligand is critical in triggering apoptosis of some types of cells such as lymphocytes. Defects in this gene may be related to some cases of systemic lupus erythematosus (SLE).

## For Research Use Only

A Reliable Research Partner in Life Science and Medicine

Toll-free: 1-888-852-8623

Web: [www.elabscience.com](http://www.elabscience.com)

Tel: 1-832-243-6086

Email: [techsupport@elabscience.com](mailto:techsupport@elabscience.com)

Fax: 1-832-243-6017