

# HSPA5 Polyclonal Antibody

Catalog Number:E-AB-70041

**Note:** Centrifuge before opening to ensure complete recovery of vial contents.

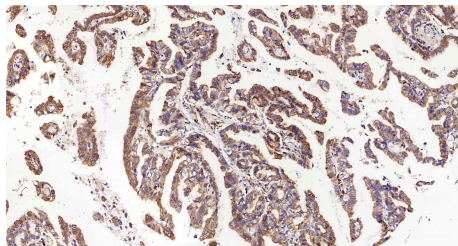
## Description

<b>Reactivity</b>	Human,Mouse,Rat
<b>Immunogen</b>	KLH conjugated Synthetic peptide corresponding to Mouse GRP78
<b>Host</b>	Rabbit
<b>Isotype</b>	IgG
<b>Purification</b>	Affinity purification
<b>Conjugation</b>	Unconjugated
<b>Formulation</b>	PBS with 0.02% sodium azide, 1% protective protein and 50% glycerol, pH7.4

## Applications Recommended Dilution

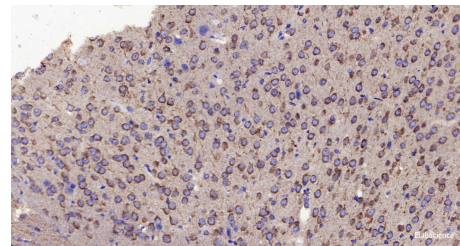
<b>IHC</b>	1:500-1:1000
<b>IF</b>	1:200-1:500

## Data

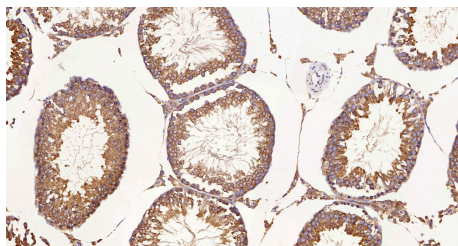


Immunohistochemistry analysis of paraffin-embedded human stomach cancer using HSPA5 Polyclonal Antibody at dilution of 1:300.

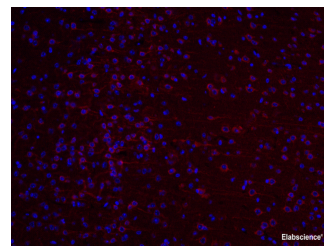
**Observed Mw:78kDa**  
**Calculated Mw:78kDa**



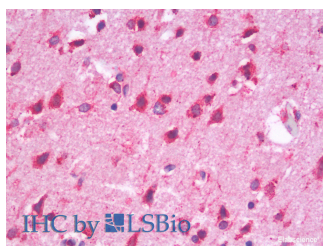
Immunohistochemistry analysis of paraffin-embedded Mouse brain using HSPA5 Polyclonal Antibody at dilution of 1:300.



Immunohistochemistry analysis of paraffin-embedded Rat testis using HSPA5 Polyclonal Antibody at dilution of 1:300.



Immunofluorescence analysis of paraffin-embedded mouse brain using HSPA5 Polyclonal Antibody at dilution of 1:200.



## For Research Use Only

A Reliable Research Partner in Life Science and Medicine

Toll-free: 1-888-852-8623

Web: [www.elabscience.com](http://www.elabscience.com)

Tel: 1-832-243-6086

Email: [techsupport@elabscience.com](mailto:techsupport@elabscience.com)

Fax: 1-832-243-6017

# HSPA5 Polyclonal Antibody

Catalog Number:E-AB-70041



Immunohistochemistry analysis of paraffin-embedded Human Cortex using HSPA5 Polyclonal Antibody(Elabscience® Product Detected by Lifespan).

## Preparation & Storage

**Storage** Store at -20°C. Avoid freeze / thaw cycles.

## Background

The protein encoded by this gene is a member of the heat shock protein 70 (HSP70) family. It is localized in the lumen of the endoplasmic reticulum (ER), and is involved in the folding and assembly of proteins in the ER. As this protein interacts with many ER proteins, it may play a key role in monitoring protein transport through the cell.

## For Research Use Only

A Reliable Research Partner in Life Science and Medicine

Toll-free: 1-888-852-8623

Web: [www.elabscience.com](http://www.elabscience.com)

Tel: 1-832-243-6086

Email: [techsupport@elabscience.com](mailto:techsupport@elabscience.com)

Fax: 1-832-243-6017