

ATF2 Polyclonal Antibody

Catalog Number:E-AB-70184

Note: Centrifuge before opening to ensure complete recovery of vial contents.

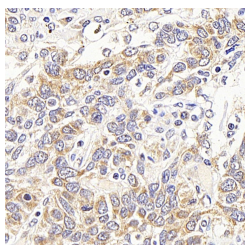
Description

Reactivity	Human,Mouse,Rat
Immunogen	KLH conjugated Synthetic peptide corresponding to Mouse ATF2
Host	Rabbit
Isotype	IgG
Purification	Affinity purification
Conjugation	Unconjugated
Formulation	PBS with 0.02% sodium azide, 1% protective protein and 50% glycerol, pH7.4

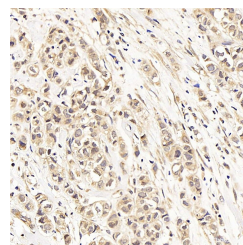
Applications Recommended Dilution

IHC	1:200-1:800
------------	-------------

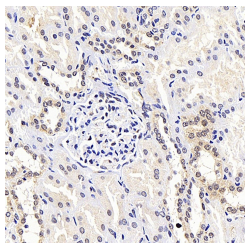
Data



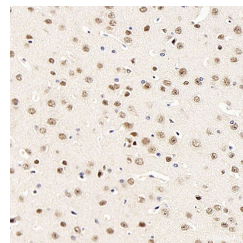
Immunohistochemistry analysis of paraffin-embedded human lung cancer using ATF2 Polyclonal Antibody at dilution of 1:400.



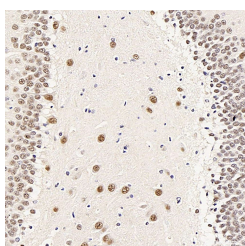
Immunohistochemistry analysis of paraffin-embedded human breast cancer using ATF2 Polyclonal Antibody at dilution of 1:400.



Immunohistochemistry analysis of paraffin-embedded human kidney using ATF2 Polyclonal Antibody at dilution of 1:400.



Immunohistochemistry analysis of paraffin-embedded mouse brain using ATF2 Polyclonal Antibody at dilution of 1:400.



Immunohistochemistry analysis of paraffin-embedded rat brain using ATF2 Polyclonal Antibody at dilution of 1:400.

For Research Use Only

A Reliable Research Partner in Life Science and Medicine

Toll-free: 1-888-852-8623

Web: www.elabscience.com

Tel: 1-832-243-6086

Email: techsupport@elabscience.com

Fax: 1-832-243-6017

ATF2 Polyclonal Antibody

Catalog Number:E-AB-70184



Preparation & Storage

Storage Store at -20°C. Avoid freeze / thaw cycles.

Background

This gene encodes a transcription factor that is a member of the leucine zipper family of DNA binding proteins. This protein binds to the cAMP-responsive element (CRE), an octameric palindrome. It forms a homodimer or a heterodimer with c-Jun and stimulates CRE-dependent transcription. This protein is also a histone acetyltransferase (HAT) that specifically acetylates histones H2B and H4 in vitro; thus it may represent a class of sequence-specific factors that activate transcription by direct effects on chromatin components. Several alternatively spliced transcript variants have been found for this gene.

For Research Use Only

A Reliable Research Partner in Life Science and Medicine

Toll-free: 1-888-852-8623

Web: www.elabscience.com

Tel: 1-832-243-6086

Email: techsupport@elabscience.com

Fax: 1-832-243-6017