

# DLL4 Polyclonal Antibody

Catalog Number: E-AB-70190

1 Publications



**Note:** Centrifuge before opening to ensure complete recovery of vial contents.

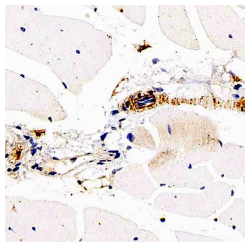
## Description

<b>Reactivity</b>	Mouse, Rat
<b>Immunogen</b>	KLH conjugated Synthetic peptide corresponding to Mouse DLL4
<b>Host</b>	Rabbit
<b>Isotype</b>	IgG
<b>Purification</b>	Affinity purification
<b>Conjugation</b>	Unconjugated
<b>Formulation</b>	PBS with 0.02% sodium azide, 1% protective protein and 50% glycerol, pH7.4

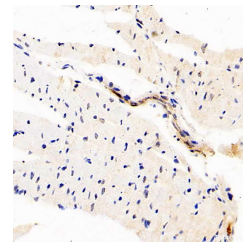
## Applications Recommended Dilution

<b>IHC</b>	1:200-1:500
------------	-------------

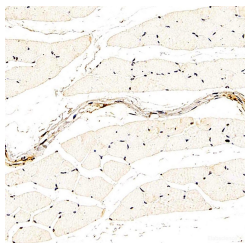
## Data



Immunohistochemistry analysis of paraffin-embedded mouse skeletal muscle using DLL4 Polyclonal Antibody at dilution of 1:200.



Immunohistochemistry analysis of paraffin-embedded rat heart using DLL4 Polyclonal Antibody at dilution of 1:200.



Immunohistochemistry analysis of paraffin-embedded rat skeletal muscle using DLL4 Polyclonal Antibody at dilution of 1:200.

## Preparation & Storage

**Storage** Store at -20°C. Avoid freeze / thaw cycles.

## Background

This gene is a homolog of the Drosophila delta gene. The delta gene family encodes Notch ligands that are characterized by a DSL domain, EGF repeats, and a transmembrane domain.

## For Research Use Only

A Reliable Research Partner in Life Science and Medicine

Toll-free: 1-888-852-8623

Web: [www.elabscience.com](http://www.elabscience.com)

Tel: 1-832-243-6086

Email: [techsupport@elabscience.com](mailto:techsupport@elabscience.com)

Fax: 1-832-243-6017