

# Recombinant Cytochrome C Monoclonal Antibody

Catalog Number: E-AB-81449

1 Publications



**Note:** Centrifuge before opening to ensure complete recovery of vial contents.

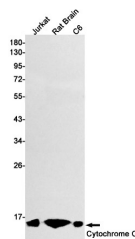
## Description

<b>Reactivity</b>	Human, Mouse, Rat
<b>Immunogen</b>	A synthetic peptide of human Cytochrome C
<b>Host</b>	Rabbit
<b>Isotype</b>	IgG
<b>Clone</b>	R09-6H3
<b>Purification</b>	Affinity Purified
<b>Conjugation</b>	Unconjugated
<b>Formulation</b>	50mM Tris-Glycine (pH 7.4), 0.15M NaCl, 40% Glycerol, 0.01% Sodium azide and 0.05% protective protein

## Applications Recommended Dilution

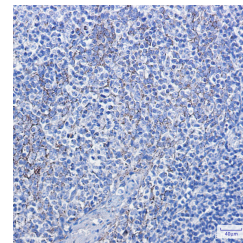
<b>WB</b>	1:1000-1:2000
<b>IHC</b>	1:50-1:100

## Data



Western blot detection of Cytochrome C in Jurkat, Rat Brain, C6 cell lysates using Cytochrome C Rabbit mAb (1:1000 diluted). Predicted band size: 12kDa. Observed band size: 14kDa.

**Observed Mw: 14kDa**  
**Calculated Mw: 12kDa**



Immunohistochemistry of Cytochrome C in paraffin-embedded human tonsil using Cytochrome C Rabbit mAb at dilution 1:100

## Preparation & Storage

**Storage** Store at -20°C. Avoid freeze / thaw cycles.

## Background

Cytochrome c is a 12-15 kDa electron transporting protein located in the inner mitochondrial membrane. Upon apoptotic stimulation, cytochrome c can be released from mitochondria into cytoplasm, resulting in caspase-3 activation and apoptosis. Measurement of cytochrome c release from the mitochondria is useful for detection of the onset of apoptosis in cells. In addition, cytochrome c can also leave cells and be detectable in extra-cellular medium of apoptotic cells and serum of cancer patients. The level of serum cytochrome c may serve as a prognostic marker during cancer therapy.

## For Research Use Only

A Reliable Research Partner in Life Science and Medicine

Toll-free: 1-888-852-8623

Web: [www.elabscience.com](http://www.elabscience.com)

Tel: 1-832-243-6086

Email: [techsupport@elabscience.com](mailto:techsupport@elabscience.com)

Fax: 1-832-243-6017