

Recombinant SUMO Conjugating Enzyme UBC9 Monoclonal Antibody

Catalog Number:E-AB-81514

Note: Centrifuge before opening to ensure complete recovery of vial contents.

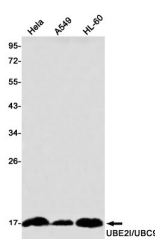
Description

Reactivity	Human,Mouse,Rat
Immunogen	A synthetic peptide of human UBE2I/UBC9
Host	Rabbit
Isotype	IgG
Clone	R01-6I6
Purification	Affinity Purified
Conjugation	Unconjugated
Formulation	50mM Tris-Glycine(pH 7.4), 0.15M NaCl, 40% Glycerol, 0.01% Sodium azide and 0.05% protective protein

Applications Recommended Dilution

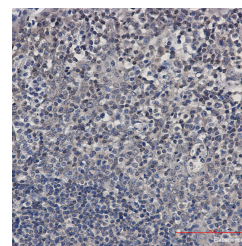
WB	1:500-1:1000
IHC	1:50-1:100

Data



Western blot detection of UBE2I/UBC9 in HeLa,A549,HL-60 using UBE2I/UBC9 Rabbit mAb(1:1000 diluted)

Observed Mw:18kDa
Calculated Mw:18kDa



Immunohistochemistry of UBE2I/UBC9 in paraffin-embedded Human tonsil using UBE2I/UBC9 Rabbit mAb at dilution 1:50

Preparation & Storage

Storage Store at -20°C. Avoid freeze / thaw cycles.

Background

UBE2I is also named as UBC9,UBCE9 and belongs to the ubiquitin-conjugating enzyme family. It is a homologue of the E2 ubiquitin conjugating enzyme and participates in the covalent linking of SUMO-1 molecule to the target protein. This protein is present at a high level in spleen and lung. Moderate level of UBE2I is detected in kidney and liver. Low amount of UBE2I is observed in brain, whereas the 18 kDa band of UBE2I is barely visible or absent in heart and skeletal muscle. In heart and muscle extracts the UBE2I antibodies recognizes a 38 kDa protein band, but this band is not visible in extracts of other rat tissues.

For Research Use Only

A Reliable Research Partner in Life Science and Medicine

Toll-free: 1-888-852-8623

Web: www.elabscience.com

Tel: 1-832-243-6086

Email: techsupport@elabscience.com

Fax: 1-832-243-6017