

Recombinant Cofilin Monoclonal Antibody

Catalog Number:E-AB-81548



Note: Centrifuge before opening to ensure complete recovery of vial contents.

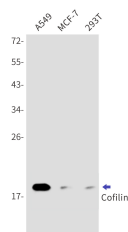
Description

Reactivity	Human
Immunogen	A synthetic peptide of human Cofilin
Host	Rabbit
Isotype	IgG
Clone	R06-2C0
Purification	Affinity Purified
Conjugation	Unconjugated
Formulation	50mM Tris-Glycine(pH 7.4), 0.15M NaCl, 40% Glycerol, 0.01% Sodium azide and 0.05% protective protein

Applications Recommended Dilution

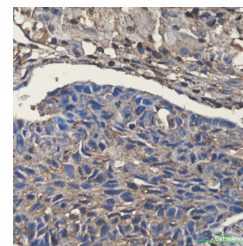
WB	1:500-1:1000
IHC	1:50-1:200
IF	1:50-1:100

Data

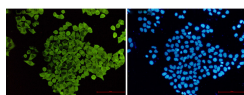


Western blot detection of Cofilin in A549, MCF-7, 293T cell lysates using Cofilin Rabbit mAb (1:1000 diluted). Predicted band size: 19kDa. Observed band size: 19kDa.

Observed Mw:19kDa
Calculated Mw:19kDa



Immunohistochemical of Cofilin in Human lung cancer tissue using Cofilin antibody at dilution 1:200



Immunofluorescence of Cofilin (green) in HeLa using Cofilin Rabbit mAb at dilution 1:50, and DAPI (blue)

Preparation & Storage

Storage Store at -20°C. Avoid freeze / thaw cycles.

For Research Use Only

A Reliable Research Partner in Life Science and Medicine

Toll-free: 1-888-852-8623

Web: www.elabscience.com

Tel: 1-832-243-6086

Email: techsupport@elabscience.com

Fax: 1-832-243-6017

Recombinant Cofilin Monoclonal Antibody

Catalog Number:E-AB-81548



Background

Cofilin is a ubiquitous actin-binding protein required for the reorganization of actin filaments. It is a member of ADF (actin-depolymerizing factor)/cofilin family that is a key regulator of actin dynamics and essential for cellular motility, cytokinesis, and endocytosis. Cofilin activity is tightly regulated by phosphorylation and dephosphorylation. Phosphorylation at Ser3 can inhibit its activity, also causing translocation from the nucleus to the cytoplasm.

For Research Use Only

A Reliable Research Partner in Life Science and Medicine

Toll-free: 1-888-852-8623

Web: www.elabscience.com

Tel: 1-832-243-6086

Email: techsupport@elabscience.com

Fax: 1-832-243-6017