

Recombinant E2F1 Monoclonal Antibody

Catalog Number:E-AB-81553



Note: Centrifuge before opening to ensure complete recovery of vial contents.

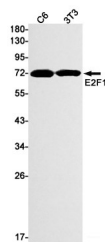
Description

Reactivity	Human,Mouse,Rat
Immunogen	A synthetic peptide of human E2F1
Host	Rabbit
Isotype	IgG
Clone	R03-5G3
Purification	Affinity Purified
Conjugation	Unconjugated
Formulation	50mM Tris-Glycine(pH 7.4), 0.15M NaCl, 40% Glycerol, 0.01% Sodium azide and 0.05% protective protein

Applications Recommended Dilution

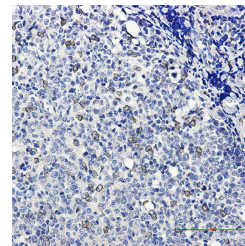
WB	1:500-1:1000
IHC	1:20-1:100
IF	1:50-1:100

Data

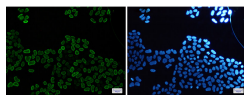


Western blot detection of E2F1 in C6,3T3 cell lysates using E2F1 Rabbit mAb(1:1000 diluted).Predicted band size:47kDa.Observed band size:70kDa.

Observed Mw:70kDa
Calculated Mw:47kDa



Immunohistochemistry of E2F1 in paraffin-embedded Human tonsil using E2F1 Rabbit mAb at dilution 1:20



Immunofluorescence of E2F1(green) in HeLa cells using E2F1 Rabbit mAb at dilution 1:50, and DAPI(blue)

Preparation & Storage

For Research Use Only

A Reliable Research Partner in Life Science and Medicine

Toll-free: 1-888-852-8623

Web: www.elabscience.com

Tel: 1-832-243-6086

Email: techsupport@elabscience.com

Fax: 1-832-243-6017

Recombinant E2F1 Monoclonal Antibody

Catalog Number:E-AB-81553



Storage Store at -20°C. Avoid freeze / thaw cycles.

Background

The protein encoded by this gene is a member of the E2F family of transcription factors. The E2F family plays a crucial role in the control of cell cycle and action of tumor suppressor proteins and is also a target of the transforming proteins of small DNA tumor viruses. The E2F proteins contain several evolutionally conserved domains found in most members of the family. These domains include a DNA binding domain, a dimerization domain which determines interaction with the differentiation regulated transcription factor proteins (DP), a transactivation domain enriched in acidic amino acids, and a tumor suppressor protein association domain which is embedded within the transactivation domain.

For Research Use Only

A Reliable Research Partner in Life Science and Medicine

Toll-free: 1-888-852-8623

Web: www.elabscience.com

Tel: 1-832-243-6086

Email: techsupport@elabscience.com

Fax: 1-832-243-6017