

# Recombinant RSK2 Monoclonal Antibody

Catalog Number:E-AB-81604



**Note:** Centrifuge before opening to ensure complete recovery of vial contents.

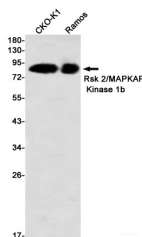
## Description

<b>Reactivity</b>	Human,Hamster
<b>Immunogen</b>	A synthetic peptide of human Rsk 2/MAPKAP Kinase 1b
<b>Host</b>	Rabbit
<b>Isotype</b>	IgG
<b>Clone</b>	R05-6E3
<b>Purification</b>	Affinity Purified
<b>Conjugation</b>	Unconjugated
<b>Formulation</b>	50mM Tris-Glycine(pH 7.4), 0.15M NaCl, 40% Glycerol, 0.01% Sodium azide and 0.05% protective protein

## Applications Recommended Dilution

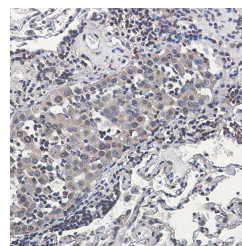
<b>WB</b>	1:1000-1:2000
<b>IHC</b>	1:50-1:100

## Data



Western blot detection of Rsk 2/MAPKAP Kinase 1b in CHO-K1,Ramos using Rsk 2/MAPKAP Kinase 1b Rabbit mAb(1:1000 diluted)

**Observed Mw:84 kDa**  
**Calculated Mw:84 kDa**



Immunohistochemistry of Rsk 2/MAPKAP Kinase 1b in paraffin-embedded Human lung cancer tissue using Rsk 2/MAPKAP Kinase 1b Rabbit mAb at dilution 1:50

## Preparation & Storage

**Storage** Store at -20°C. Avoid freeze / thaw cycles.

## Background

This gene encodes a member of the RSK (ribosomal S6 kinase) family of serine/threonine kinases. This kinase contains 2 non-identical kinase catalytic domains and phosphorylates various substrates, including members of the mitogen-activated kinase (MAPK) signalling pathway. The activity of this protein has been implicated in controlling cell growth and differentiation. Mutations in this gene have been associated with Coffin-Lowry syndrome (CLS).

## For Research Use Only

A Reliable Research Partner in Life Science and Medicine

Toll-free: 1-888-852-8623

Web: [www.elabscience.com](http://www.elabscience.com)

Tel: 1-832-243-6086

Email: [techsupport@elabscience.com](mailto:techsupport@elabscience.com)

Fax: 1-832-243-6017