

Note: Centrifuge before opening to ensure complete recovery of vial contents.

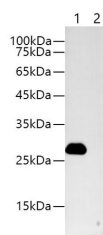
Description

Reactivity	All
Immunogen	Synthetic peptide corresponding to Myc tag conjugated to keyhole limpet haemocyanin.
Host	Mouse
Isotype	IgG2a
Purification	Protein A/G Purified
Conjugation	Unconjugated
Formulation	PBS with 0.02% sodium azide, 50% glycerol,pH 7.4

Applications Recommended Dilution

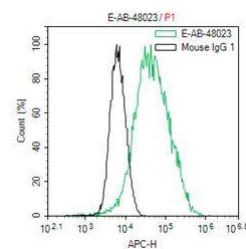
WB	1:2000-4000
FCM	0.2ug

Data



Western blotting with anti-MYC Mouse monoclonal antibody at dilution of 1:1000.Lane 1: MYC tag transfected HEK 293 cell lysates, lane 2: HEK 293 whole cell lysate

Observed Mw:28kDa
Calculated Mw:28kDa



1x10⁶ CHO cells Transfected with a MYC plasmid were stained with 0.2ug Anti-MYC tag mAb(E-AB-48023) and AF647 conjugated Goat Anti-mouse IgG(H+L);isotype Control stained with 0.2ug mouse IgG and AF647 conjugated Goat Anti-mouse IgG (H+L)

Preparation & Storage

Storage Store at -20°C. Avoid freeze / thaw cycles.

Background

The MYC tag, derived from the c-MYC protein, is a popular epitope tag for detecting the expression of recombinant proteins in yeast, bacteria, insect, and mammalian cell systems. It can be used for affinity chromatography, then used to separate recombinant, overexpressed protein from wild type protein expressed by the host organism. It can also be used in the isolation of protein complexes with multiple subunits.

For Research Use Only

A Reliable Research Partner in Life Science and Medicine

Toll-free: 1-888-852-8623

Web: www.elabscience.com

Tel: 1-832-243-6086

Email: techsupport@elabscience.com

Fax: 1-832-243-6017