

Note: Centrifuge before opening to ensure complete recovery of vial contents.

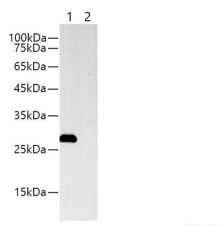
Description

Reactivity	All
Immunogen	Synthetic peptide corresponding to Myc tag conjugated to keyhole limpet haemocyanin.
Host	Rabbit
Isotype	IgG
Purification	Protein A/G Purified
Conjugation	Unconjugated
Formulation	PBS with 0.02% sodium azide, 50% glycerol,pH 7.4

Applications Recommended Dilution

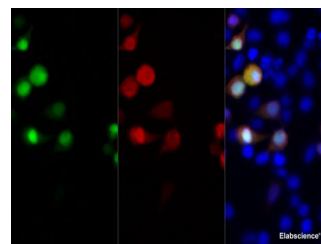
WB	1:2000-5000
IP	3ug/sample
IF	1:400-800

Data

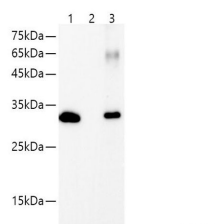


Western blotting with anti-MYC rabbit monoclonal antibody at dilution of 1:5000.Lane 1: MYC tag transfected HEK 293 cell lysates, lane 2: HEK 293 whole cell lysate

Observed Mw:28kDa
Calculated Mw:28kDa



Immunofluorescent analysis of 293F cells transfected with Myc-Tag fusion protein, using anti-Myc-Tag rabbit monoclonal antibody at dilution of 1:200.



IP Result of 293F cells transfected with Myc-Tag fusion protein,using anti-Myc-Tag rabbit monoclonal antibody . Lane 1:input, lane 2: rabbit IgG Isotype Control, Lane 3: anti-Myc-Tag rabbit monoclonal antibody

Preparation & Storage

For Research Use Only

A Reliable Research Partner in Life Science and Medicine

Toll-free: 1-888-852-8623

Web: www.elabscience.com

Tel: 1-832-243-6086

Email: techsupport@elabscience.com

Fax: 1-832-243-6017

Myc-Tag Monoclonal Antibody

Catalog Number:E-AB-48024



Storage Store at -20°C. Avoid freeze / thaw cycles.

Background

The MYC tag, derived from the c-MYC protein, is a popular epitope tag for detecting the expression of recombinant proteins in yeast, bacteria, insect, and mammalian cell systems. It can be used for affinity chromatography, then used to separate recombin

For Research Use Only

A Reliable Research Partner in Life Science and Medicine

Toll-free: 1-888-852-8623

Web: www.elabscience.com

Tel: 1-832-243-6086

Email: techsupport@elabscience.com

Fax: 1-832-243-6017