

# Recombinant Human TNFSF4/OX40L protein (His tag)



Catalog Number:PDMH100152

**Note:** Centrifuge before opening to ensure complete recovery of vial contents.

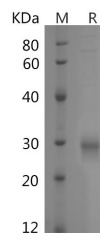
## Description

<b>Synonyms</b>	Tumor necrosis factor ligand superfamily member 4;Glycoprotein Gp34;OX40 ligand;OX40L;TAX transcriptionally-activated glycoprotein 1;TNFSF4;CD252;TXGP1;CD134L;CD252;GP34;OX-40;TXGP1
<b>Species</b>	Human
<b>Expression Host</b>	HEK293 Cells
<b>Sequence</b>	Gln51-Leu183
<b>Accession</b>	P23510
<b>Calculated Molecular Weight</b>	14.5 kDa
<b>Observed molecular weight</b>	30 kDa
<b>Tag</b>	C-His

## Properties

<b>Purity</b>	> 95 % as determined by reducing SDS-PAGE.
<b>Endotoxin</b>	Please contact us for more information.
<b>Storage</b>	Generally, lyophilized proteins are stable for up to 12 months when stored at -20 to -80°C. Reconstituted protein solution can be stored at 4-8°C for 2-7 days. Aliquots of reconstituted samples are stable at < -20°C for 3 months.
<b>Shipping</b>	This product is provided as lyophilized powder which is shipped with ice packs.
<b>Formulation</b>	Lyophilized from sterile PBS, pH 7.4. Normally 5 % - 8 % trehalose, mannitol and 0.01% Tween80 are added as protectants before lyophilization. Please refer to the specific buffer information in the printed manual.
<b>Reconstitution</b>	Please refer to the printed manual for detailed information.

## Data



> 95 % as determined by reducing SDS-PAGE.

## Background

Tumor necrosis factor ligand superfamily member 4(TNFSF4/OX40L) is a single-pass type II membrane protein. OX40L is expressed on the surface of activated B cells;T cells;dendritic cells and endothelial cells. OX40L binds to OX40(CD134);a member of the TNF receptor superfamily that is expressed predominantly on activated CD4+ T cells. OX40-OX40L co-stimulates signal to promote the survival and proliferation of activated CD4+ T cells and prolong the immune response. It involved in T-cell proliferation and cytokine production. Additional;it has been found association with systemic lupus erythematosus;no association with occurrence of atherosclerosis.

## For Research Use Only

A Reliable Research Partner in Life Science and Medicine

Toll-free: 1-888-852-8623

Web: [www.elabscience.com](http://www.elabscience.com)

Tel: 1-832-243-6086

Email: [techsupport@elabscience.com](mailto:techsupport@elabscience.com)

Fax: 1-832-243-6017