

Elab Fluor® Violet 450 Anti-Human CD193/CCR3 Antibody[5E8]

Catalog No.	E-AB-F1303Q	Reactivity	Human
Storage	Store at 2~8°C, Avoid freeze / thaw cycles	Applications	FCM

Important Note: Centrifuge before opening to ensure complete recovery of vial contents.

Antigen Information

Alternate Names	CC CKR3, MIP1-alpha receptor like-2, eotaxin receptor, CCR, C-C chemokine receptor type 3
Uniprot ID	P51677
Gene ID	1232
Background	CD193, also known as CC-chemokine receptor 3 (CCR3), CC CKR3, MIP1-alpha receptor like-2, and eotaxin receptor, is a member of the G protein-coupled seven transmembrane receptors family. It binds to the CC chemokines eotaxin, eotaxin-2, and eotaxin-3 with high affinity. CCR3 has also been reported to bind RANTES, MCP-3, and MCP-4 with low affinity. CCR3 receptor is expressed on human eosinophils, basophils, mast cells, mononuclear phagocytes, platelets, CD34+ hematopoietic progenitor cells, Th2-like lymphocytes, and keratinocytes. CCR3 is thought to play a role in allergic diseases such as bronchial asthma and allergic rhinitis. CCR3 is a co-receptor for HIV-1 and HIV-2, and the binding of eotaxin with CCR3 has been shown to inhibit HIV infection in some cell types.

Product Details

Form	Liquid
Size	20Tests/100Tests/100Tests×2
Clone No.	5E8
Host	Mouse
Isotype	Mouse IgG2b, κ
Reactivity	Human
Application	FCM
Isotype Control	Elab Fluor® Violet 450 Mouse IgG2b, κ Isotype Control[MPC-11] [Product E-AB-F09812Q]
Storage Buffer	Phosphate buffered solution, pH 7.2, containing 0.09% stabilizer and 1% protein protectant.
Shipping	Biological ice pack at 4 °C
Stability & Storage	Keep as concentrated solution. Store at 2~8°C and protected from prolonged exposure to light. Do not freeze. This product is guaranteed up to one year from purchase.

For Research Use Only

Fluorophore

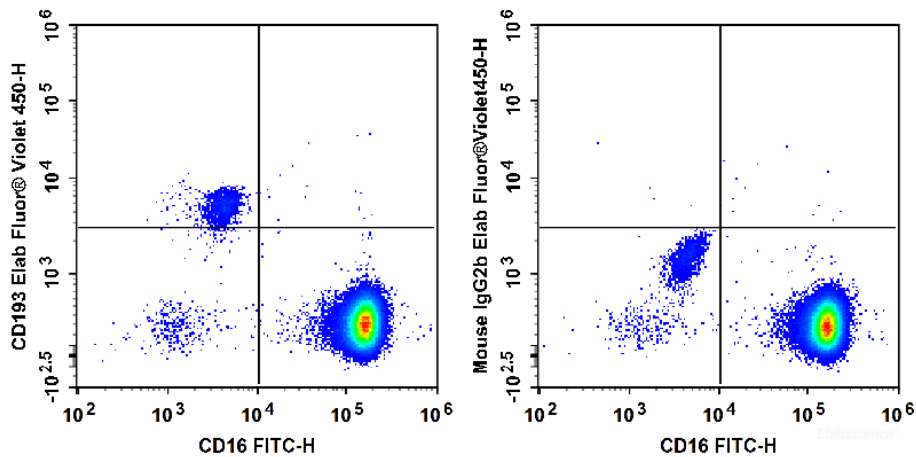
Conjugation: Elab Fluor® Violet 450

Elab Fluor® Violet 450 is designed to be excited by the violet laser (405 nm) and detected using an optical filter centered near 450 nm (e.g., a 450/45 nm bandpass filter).

Recommended usage

Each lot of this antibody is quality control tested by flow cytometric analysis. **The amount of the reagent is suggested to be used 5 µL of antibody per test (million cells in 100 µL staining volume or per 100 µL of whole blood).** Please check your vial before the experiment. Since applications vary, the appropriate dilutions must be determined for individual use.

Product data



Human peripheral blood granulocytes are stained with FITC Anti-Human CD16 Antibody and Elab Fluor® Violet 450 Anti-Human CD193/CCR3 Antibody (Left). Granulocytes are stained with FITC Anti-Human CD16 Antibody and Elab Fluor® Violet 450 Mouse IgG2b,κ Isotype Control (Right).

Related Information

1. Sample Preparation for Flow Cytometry <https://www.elabscience.com/List-detail-5594.html>
2. Staining Cell Surface Targets for Flow Cytometry <https://www.elabscience.com/List-detail-5568.html>
3. Flow Cytometry Troubleshooting Tips <https://www.elabscience.com/List-detail-5593.html>
4. How to select the appropriate detection channel through the spectrogram? <https://www.elabscience.com/List-detail-459742.html>