

**Elab Fluor® 488 Anti-Mouse/Rat CD29 Antibody[HMβ1-1]**

<b>Catalog No.</b>	E-AB-F1309L	<b>Reactivity</b>	Mouse,Rat
<b>Storage</b>	Store at 2~8°C, Avoid freeze / thaw cycles	<b>Applications</b>	FCM

**Important Note:** Centrifuge before opening to ensure complete recovery of vial contents.

**Antigen Information**

<b>Alternate Names</b>	integrin β1, VLA-β chain, β1 integrin, GPIIa, ITGB1
<b>Uniprot ID</b>	P09055, P49134
<b>Gene ID</b>	16412, 24511
<b>Background</b>	CD29 is a 130 kD protein, also known as integrin β1, VLA-β chain, or GPIIa. It is a member of the integrin family, expressed broadly on leukocytes, endothelial cells, smooth muscle, and epithelial cells. In association with CD49a-f, CD29 forms the VLA-1 through VLA-6 complexes, respectively. It plays an important role in cell-cell or cell-matrix interaction. The HMβ1-1 antibody reacts with both mouse and rat CD29. It is able to block cell adhesion and inhibit T cell proliferation.

**Product Details**

<b>Form</b>	Liquid
<b>Size</b>	50Tests/100Tests/100Tests×2
<b>Clone No.</b>	HMβ1-1
<b>Host</b>	Armenian Hamster
<b>Isotype</b>	Armenian Hamster IgG
<b>Reactivity</b>	Mouse,Rat
<b>Application</b>	FCM
<b>Isotype Control</b>	<a href="#">[Product E-AB-F09852L]</a>
<b>Storage Buffer</b>	Phosphate buffered solution, pH 7.2, containing 0.09% stabilizer and 1% protein protectant.
<b>Shipping</b>	Biological ice pack at 4 °C
<b>Stability &amp; Storage</b>	Keep as concentrated solution. Store at 2~8°C and protected from prolonged exposure to light.Do not freeze. This product is guaranteed up to one year from purchase.

**For Research Use Only**

## Fluorophore

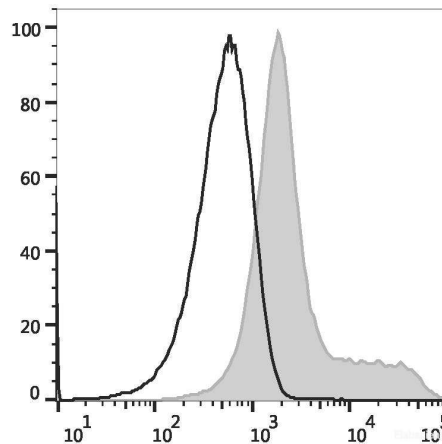
**Conjugation:** Elab Fluor® 488

Elab Fluor® 488 is designed to be excited by the Blue laser (488 nm) and detected using an optical filter centered near 520 nm (e.g., a 525/40 nm bandpass filter).

## Recommended usage

Each lot of this antibody is quality control tested by flow cytometric analysis. **The amount of the reagent is suggested to be used 5 µL of antibody per test (million cells in 100 µL staining volume or per 100 µL of whole blood).** Please check your vial before the experiment. Since applications vary, the appropriate dilutions must be determined for individual use.

## Product data



C57BL/6 murine splenocytes are stained with Elab Fluor® 488 Anti-Mouse/Rat CD29 Antibody (filled gray histogram) or Elab Fluor® 488 Armenian Hamster IgG Isotype Control (empty black histogram).

## Related Information

1. Sample Preparation for Flow Cytometry <https://www.elabscience.com/List-detail-5594.html>
2. Staining Cell Surface Targets for Flow Cytometry <https://www.elabscience.com/List-detail-5568.html>
3. Flow Cytometry Troubleshooting Tips <https://www.elabscience.com/List-detail-5593.html>
4. How to select the appropriate detection channel through the spectrogram? <https://www.elabscience.com/List-detail-459742.html>