

ELK1 Polyclonal Antibody

Catalog Number:E-AB-90026



Note: Centrifuge before opening to ensure complete recovery of vial contents.

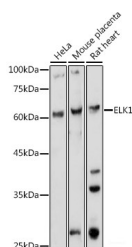
Description

Reactivity	Human,Mouse,Rat
Immunogen	Recombinant fusion protein of human ELK1
Host	Rabbit
Isotype	IgG
Purification	Affinity purification
Conjugation	Unconjugated
Formulation	PBS with 0.05% proclin300,50% glycerol,pH7.3.

Applications Recommended Dilution

WB	1:1000-1:2000
-----------	---------------

Data



Western blot analysis of extracts of various cell lines using ELK1 Polyclonal Antibody at 1:1000 dilution.

Observed Mw:62KDa
Calculated Mw:11kDa/44kDa

Preparation & Storage

Storage Store at -20°C. Avoid freeze/thaw cycles.

Background

This gene is a member of the Ets family of transcription factors and of the ternary complex factor (TCF) subfamily. Proteins of the TCF subfamily form a ternary complex by binding to the the serum response factor and the serum response element in the promoter of the c-fos proto-oncogene. The protein encoded by this gene is a nuclear target for the ras-raf-MAPK signaling cascade. This gene produces multiple isoforms by using alternative translational start codons and by alternative splicing. Related pseudogenes have been identified on chromosomes 7 and 14.

For Research Use Only

A Reliable Research Partner in Life Science and Medicine

Toll-free: 1-888-852-8623

Web: www.elabscience.com

Tel: 1-832-243-6086

Email: techsupport@elabscience.com

Fax: 1-832-243-6017