

RBM45 Polyclonal Antibody

Catalog Number:E-AB-90697

Note: Centrifuge before opening to ensure complete recovery of vial contents.

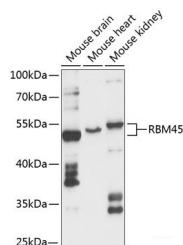
Description

Reactivity	Mouse
Immunogen	Recombinant fusion protein of human RBM45
Host	Rabbit
Isotype	IgG
Purification	Affinity purification
Conjugation	Unconjugated
Formulation	PBS with 0.01% thiomersal,50% glycerol,pH7.3.

Applications Recommended Dilution

WB	1:500-1:2000
-----------	--------------

Data



Western blot analysis of extracts of various cell lines using RBM45 Polyclonal Antibody at 1:3000 dilution.

Observed Mw:52-54kDa
Calculated Mw:37kDa/53kDa

Preparation & Storage

Storage Store at -20°C. Avoid freeze/thaw cycles.

Background

This gene encodes a member of the RNA recognition motif (RRM)-type RNA-binding family of proteins. This protein exhibits preferential binding to poly(C) RNA. Initial cloning of this gene found that the rat ortholog was dynamically expressed in the developing rat brain. This protein has been localized to inclusion bodies in the brain and spinal cord of amyotrophic lateral sclerosis and Alzheimer's patients. A pseudogene has been identified on chromosome 8.

For Research Use Only

A Reliable Research Partner in Life Science and Medicine

Toll-free: 1-888-852-8623

Web: www.elabscience.com

Tel: 1-832-243-6086

Email: techsupport@elabscience.com

Fax: 1-832-243-6017