

LYPD3 Polyclonal Antibody

Catalog Number:E-AB-90983



Note: Centrifuge before opening to ensure complete recovery of vial contents.

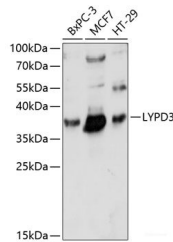
Description

Reactivity	Human
Immunogen	Recombinant fusion protein of human LYPD3
Host	Rabbit
Isotype	IgG
Purification	Affinity purification
Conjugation	Unconjugated
Formulation	PBS with 0.01% thiomersal,50% glycerol,pH7.3.

Applications Recommended Dilution

WB	1:500-1:2000
-----------	--------------

Data



Western blot analysis of extracts of various cell lines using LYPD3 Polyclonal Antibody at 1:1000 dilution.

Observed Mw:36kDa
Calculated Mw:35kDa

Preparation & Storage

Storage Store at -20°C. Avoid freeze/thaw cycles.

Background

Supports cell migration. May be involved in urothelial cell-matrix interactions. May be involved in tumor progression.

For Research Use Only

A Reliable Research Partner in Life Science and Medicine

Toll-free: 1-888-852-8623

Web: www.elabscience.com

Tel: 1-832-243-6086

Email: techsupport@elabscience.com

Fax: 1-832-243-6017