

NSG1 Polyclonal Antibody

Catalog Number:E-AB-91867



Note: Centrifuge before opening to ensure complete recovery of vial contents.

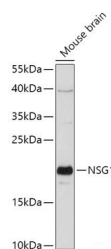
Description

Reactivity	Human,Mouse,Rat
Immunogen	Recombinant fusion protein of human NSG1
Host	Rabbit
Isotype	IgG
Purification	Affinity purification
Conjugation	Unconjugated
Formulation	PBS with 0.01% thiomersal,50% glycerol,pH7.3.

Applications Recommended Dilution

WB	1:500-1:2000
-----------	--------------

Data



Western blot analysis of extracts of Mouse brain using NSG1 Polyclonal Antibody at 1:1000 dilution.

Observed Mw:21kDa

Preparation & Storage

Storage Store at -20°C. Avoid freeze/thaw cycles.

Background

Predicted to enable clathrin light chain binding activity. Involved in apoptotic process. Located in endoplasmic reticulum.

For Research Use Only

A Reliable Research Partner in Life Science and Medicine

Toll-free: 1-888-852-8623

Web: www.elabscience.com

Tel: 1-832-243-6086

Email: techsupport@elabscience.com

Fax: 1-832-243-6017