

# RPS6KA1/RPS6KA2/RPS6KA3 Polyclonal Antibody

Catalog Number:E-AB-92216



**Note:** Centrifuge before opening to ensure complete recovery of vial contents.

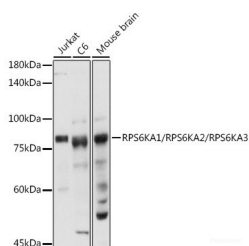
## Description

|                     |  |
|---------------------|--|
| <b>Reactivity</b>   | Human,Mouse,Rat                                      |
| <b>Immunogen</b>    | A synthetic peptide of human RPS6KA1/RPS6KA2/RPS6KA3 |
| <b>Host</b>         | Rabbit   |
| <b>Isotype</b>      | IgG  |
| <b>Purification</b> | Affinity purification                                |
| <b>Conjugation</b>  | Unconjugated   |
| <b>Formulation</b>  | PBS with 0.01% thiomersal,50% glycerol,pH7.3.        |

## Applications Recommended Dilution

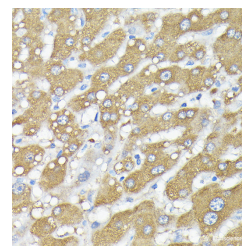
|            |              |
|------------|--------------|
| <b>WB</b>  | 1:500-1:2000 |
| <b>IHC</b> | 1:50-1:200   |
| <b>IF</b>  | 1:50-1:200   |

## Data

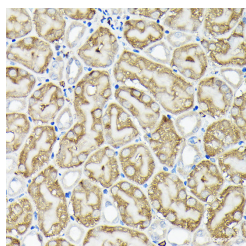


Western blot analysis of extracts of various cell lines using RPS6KA1/RPS6KA2/RPS6KA3 Polyclonal Antibody at 1:1000 dilution.

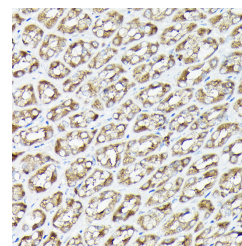
**Observed Mw:83KDa**



Immunohistochemistry of paraffin-embedded human liver using RPS6KA1/RPS6KA2/RPS6KA3 Polyclonal Antibody at dilution of 1:200 (40x lens). Perform high pressure antigen retrieval with 10 mM citrate buffer pH 6.0 before commencing with IHC staining protocol.



Immunohistochemistry of paraffin-embedded mouse kidney using RPS6KA1/RPS6KA2/RPS6KA3 Polyclonal Antibody at dilution of 1:200 (40x lens). Perform high pressure antigen retrieval with 10 mM citrate buffer pH 6.0 before commencing with IHC staining protocol.



Immunohistochemistry of paraffin-embedded rat stomach using RPS6KA1/RPS6KA2/RPS6KA3 Polyclonal Antibody at dilution of 1:200 (40x lens). Perform high pressure antigen retrieval with 10 mM citrate buffer pH 6.0 before commencing with IHC staining protocol.

## For Research Use Only

A Reliable Research Partner in Life Science and Medicine

Toll-free: 1-888-852-8623

Web: [www.elabscience.com](http://www.elabscience.com)

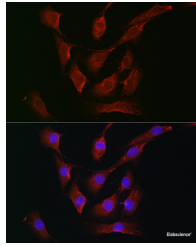
Tel: 1-832-243-6086

Email: [techsupport@elabscience.com](mailto:techsupport@elabscience.com)

Fax: 1-832-243-6017

# RPS6KA1/RPS6KA2/RPS6KA3 Polyclonal Antibody

Catalog Number:E-AB-92216



Immunofluorescence analysis of NIH-3T3 cells using RPS6KA1/RPS6KA2/RPS6KA3 Polyclonal Antibody at dilution of 1:200 (40x lens). Blue: DAPI for nuclear staining.

## Preparation & Storage

**Storage** Store at -20°C. Avoid freeze/thaw cycles.

## Background

This gene encodes a member of the RSK (ribosomal S6 kinase) family of serine/threonine kinases. This kinase contains 2 nonidentical kinase catalytic domains and phosphorylates various substrates, including members of the mitogen-activated kinase (MAPK) signalling pathway. The activity of this protein has been implicated in controlling cell growth and differentiation. Alternate transcriptional splice variants, encoding different isoforms, have been characterized.

## For Research Use Only

A Reliable Research Partner in Life Science and Medicine

Toll-free: 1-888-852-8623

Web: [www.elabscience.com](http://www.elabscience.com)

Tel: 1-832-243-6086

Email: [techsupport@elabscience.com](mailto:techsupport@elabscience.com)

Fax: 1-832-243-6017