

Note: Centrifuge before opening to ensure complete recovery of vial contents.

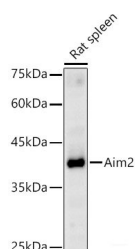
Description

Reactivity	Rat
Immunogen	Recombinant protein of mouse Aim2
Host	Rabbit
Isotype	IgG
Purification	Affinity purification
Conjugation	Unconjugated
Formulation	PBS with 0.05% proclin300,50% glycerol,pH7.3.

Applications Recommended Dilution

WB	1:500-1:2000
-----------	--------------

Data



Western blot analysis of Rat spleen using Aim2 Polyclonal Antibody at 1:1000 dilution.

Observed Mw:39KDa

Calculated Mw:40kDa

Preparation & Storage

Storage Store at -20°C. Avoid freeze/thaw cycles.

Background

Enables double-stranded DNA binding activity and identical protein binding activity. Involved in positive regulation of macromolecule metabolic process; pyroptosis; and regulation of defense response. Acts upstream of or within cellular response to interferon-beta. Located in cytoplasm. Part of AIM2 inflammasome complex. Orthologous to human AIM2 (absent in melanoma 2).

For Research Use Only

A Reliable Research Partner in Life Science and Medicine

Toll-free: 1-888-852-8623

Web: www.elabscience.com

Tel: 1-832-243-6086

Email: techsupport@elabscience.com

Fax: 1-832-243-6017