

Note: Centrifuge before opening to ensure complete recovery of vial contents.

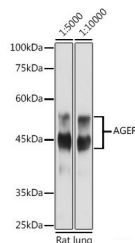
Description

| | |
|---------------------|---|
| Reactivity | Human,Mouse,Rat |
| Immunogen | Recombinant fusion protein of human AGER |
| Host | Rabbit |
| Isotype | IgG |
| Purification | Affinity purification |
| Conjugation | Unconjugated |
| Formulation | PBS with 0.05% proclin300,50% glycerol,pH7.3. |

Applications Recommended Dilution

| | |
|-----------|----------------|
| WB | 1:5000-1:10000 |
|-----------|----------------|

Data



Western blot analysis of extracts of Rat lung using AGER Polyclonal Antibody at 1:5000/1:10000 dilution.

Observed Mw:45KDa/55KDa
Calculated Mw:13kDa/35-44kDa

Preparation & Storage

Storage Store at -20°C. Avoid freeze/thaw cycles.

Background

The advanced glycosylation end product (AGE) receptor encoded by this gene is a member of the immunoglobulin superfamily of cell surface receptors. It is a multiligand receptor, and besides AGE, interacts with other molecules implicated in homeostasis, development, and inflammation, and certain diseases, such as diabetes and Alzheimer's disease. Many alternatively spliced transcript variants encoding different isoforms, as well as non-protein-coding variants, have been described for this gene (PMID:18089847).

For Research Use Only

A Reliable Research Partner in Life Science and Medicine

Toll-free: 1-888-852-8623

Web: www.elabscience.com

Tel: 1-832-243-6086

Email: techsupport@elabscience.com

Fax: 1-832-243-6017