

Note: Centrifuge before opening to ensure complete recovery of vial contents.

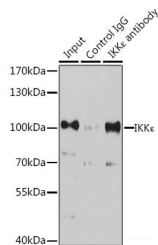
Description

Reactivity	Human,Mouse
Immunogen	Recombinant fusion protein of human IKK ϵ
Host	Rabbit
Isotype	IgG
Purification	Affinity purification
Conjugation	Unconjugated
Formulation	PBS with 0.02% sodium azide,50% glycerol,pH7.3.

Applications Recommended Dilution

WB	1:500-1:2000
IP	1:50-1:200

Data



Immunoprecipitation analysis of 200ug extracts of K-562 cells, using 3 ug IKK ϵ Polyclonal Antibody.

Western blot was performed from the immunoprecipitate using IKK ϵ Polyclonal Antibody at a dilution of 1:1000.

Observed Mw:110kDa

Calculated Mw:70kDa/80kDa

Preparation & Storage

Storage Store at -20°C. Avoid freeze/thaw cycles.

Background

IKBKE is a noncanonical I-kappa-B (see MIM 164008) kinase (IKK) that is essential for regulating antiviral signaling pathways. IKBKE has also been identified as a breast cancer (MIM 114480) oncogene and is amplified and overexpressed in over 30% of breast carcinomas and breast cancer cell lines.

For Research Use Only

A Reliable Research Partner in Life Science and Medicine

Toll-free: 1-888-852-8623

Web: www.elabscience.com

Tel: 1-832-243-6086

Email: techsupport@elabscience.com

Fax: 1-832-243-6017