

Note: Centrifuge before opening to ensure complete recovery of vial contents.

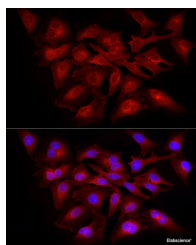
Description

Reactivity	Human, Mouse
Immunogen	Recombinant protein of mouse RELA
Host	Rabbit
Isotype	IgG
Purification	Affinity purification
Conjugation	Unconjugated
Formulation	PBS with 0.05% proclin300, 50% glycerol, pH7.3.

Applications Recommended Dilution

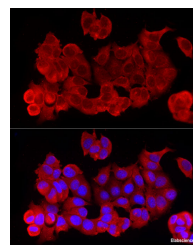
IF	1:50-1:200
-----------	------------

Data

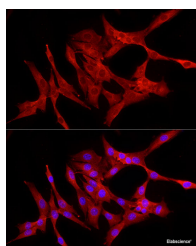


Immunofluorescence analysis of HeLa cells using RELA Polyclonal Antibody at dilution of 1:100 (40x lens). Blue: DAPI for nuclear staining.

Calculated Mw: 60kDa



Immunofluorescence analysis of MCF7 cells using RELA Polyclonal Antibody at dilution of 1:100 (40x lens). Blue: DAPI for nuclear staining.



Immunofluorescence analysis of NIH/3T3 cells using RELA Polyclonal Antibody at dilution of 1:100 (40x lens). Blue: DAPI for nuclear staining.

Preparation & Storage

Storage Store at -20°C. Avoid freeze/thaw cycles.

Background

Enables several functions, including DNA-binding transcription factor activity, RNA polymerase II-specific; actinin binding activity; and ankyrin repeat binding activity. Involved in several processes, including negative regulation of protein sumoylation; postsynapse to nucleus signaling pathway; and regulation of transcription, DNA-templated. Acts upstream of or within several processes, including cellular response to hepatocyte growth factor stimulus; cellular response

For Research Use Only

A Reliable Research Partner in Life Science and Medicine

Toll-free: 1-888-852-8623

Web: www.elabscience.com

Tel: 1-832-243-6086

Email: techsupport@elabscience.com

Fax: 1-832-243-6017

RELA Polyclonal Antibody

Catalog Number:E-AB-93364



to lipopolysaccharide; and positive regulation of interleukin-12 production. Located in several cellular components, including chromatin; cytosol; and glutamatergic synapse. Is expressed in several structures, including alimentary system; early conceptus; genitourinary system; musculature; and skin. Human ortholog(s) of this gene implicated in ductal carcinoma in situ; lung non-small cell carcinoma; lymphoma; and renal cell carcinoma. Orthologous to human RELA (RELA proto-oncogene, NF-kB subunit).

For Research Use Only

A Reliable Research Partner in Life Science and Medicine

Toll-free: 1-888-852-8623

Tel: 1-832-243-6086

Fax: 1-832-243-6017

Web: www.elabscience.com

Email: techsupport@elabscience.com