

HSPA5 Polyclonal Antibody

Catalog Number:D-AB-10170L



Note: Centrifuge before opening to ensure complete recovery of vial contents.

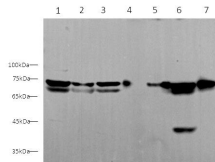
Description

Reactivity	Human,Mouse
Immunogen	Recombinant Human HSPA5 protein expressed by E.coli
Host	Rabbit
Isotype	IgG
Purification	Antigen Affinity Purification
Conjugation	Unconjugated
Formulation	PBS with 0.02% sodium azide, 50% glycerol, pH 7.4

Applications Recommended Dilution

WB	1:500-1:1000
-----------	--------------

Data



Western blot with HSPA5 Polyclonal antibody at dilution of 1:500.lane 1: Hela whole cell lysate, lane 2: Jurkat whole cell lysate, lane 3: THP-1 whole cell lysate, lane 4: HT-29 whole cell lysate, lane 5: NIH/3T3 whole cell lysate, lane 6: RAW264.7 whole cell lysate, lane 7: Mouse lung

Observed Mw:75 kDa
Calculated Mw:72 kDa

Preparation & Storage

Storage Store at -20°C. Avoid freeze/thaw cycles.

Background

Endoplasmic reticulum chaperone that plays a key role in protein folding and quality control in the endoplasmic reticulum lumen. Involved in the correct folding of proteins and degradation of misfolded proteins via its interaction with DNAJC10/ERdj5, probably to facilitate the release of DNAJC10/ERdj5 from its substrate. Acts as a key repressor of the ERN1/IRE1-mediated unfolded protein response (UPR). In the unstressed endoplasmic reticulum, recruited by DNAJB9/ERdj4 to the luminal region of ERN1/IRE1, leading to disrupt the dimerization of ERN1/IRE1, thereby inactivating ERN1/IRE1.

For Research Use Only

A Reliable Research Partner in Life Science and Medicine

Toll-free: 1-888-852-8623

Web: www.elabscience.com

Tel: 1-832-243-6086

Email: techsupport@elabscience.com

Fax: 1-832-243-6017