

K1KB3 Polyclonal Antibody

Catalog Number:D-AB-10205L



Note: Centrifuge before opening to ensure complete recovery of vial contents.

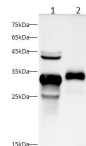
Description

Reactivity	Mouse,Rat
Immunogen	Recombinant Mouse Klk1b3 protein expressed by E.coli
Host	Rabbit
Isotype	IgG
Purification	Antigen Affinity Purification
Conjugation	Unconjugated
Formulation	PBS with 0.02% sodium azide, 50% glycerol pH 7.4

Applications Recommended Dilution

WB	1:500-1:1000
-----------	--------------

Data



Western blot with Klk1b3 Polyclonal antibody at dilution of 1:1000.lane 1:Mouse pancreas,lane 2:Rat pancreas

Observed Mw:30kDa
Calculated Mw:29kDa

Preparation & Storage

Storage Store at -20°C. Avoid freeze / thaw cycles.

Background

KLK1B3, also known as 7S nerve growth factor gamma chain. 7S nerve growth factor is composed of two alpha chains, a beta dimer composed of identical chains, and two gamma chains. The gamma chain is an arginine-specific protease; it may also have plasminogen activator activity, as well as mitogenic activity for chick embryo fibroblasts.

For Research Use Only

A Reliable Research Partner in Life Science and Medicine

Toll-free: 1-888-852-8623

Web: www.elabscience.com

Tel: 1-832-243-6086

Email: techsupport@elabscience.com

Fax: 1-832-243-6017