

Note: Centrifuge before opening to ensure complete recovery of vial contents.

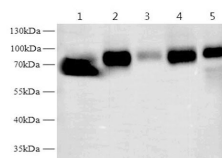
Description

Reactivity	Human,Mouse,Rat
Immunogen	Recombinant Mouse TF protein expressed by E.coli
Host	Rabbit
Isotype	IgG
Purification	Antigen Affinity Purification
Conjugation	Unconjugated
Formulation	PBS with 0.02% sodium azide, 50% glycerol pH 7.4

Applications Recommended Dilution

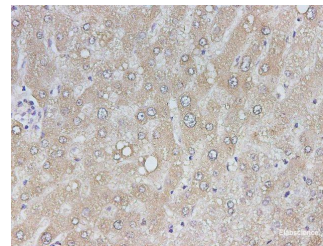
WB	1:5000-10000
IHC	1:1200-1:2400

Data



Western blot with Tf Polyclonal antibody at dilution of 1:10000.lane 1:Mouse testis,lane 2:Mouse kidney,lane 3:Mouse liver,lane 4:Rat testis,lane 5:Rat liver

Observed Mw:77 kDa
Calculated Mw:77 kDa



Immunohistochemistry of paraffin-embedded Human liver using Tf Polyclonal Antibody at dilution of 1:2400

Preparation & Storage

Storage Store at -20°C. Avoid freeze / thaw cycles.

Background

Transferrin(TF) is also named as Beta-1 metal-binding globulin,Siderophilin and belongs to the transferrin family. It is a bilobal iron-binding protein that plays the crucial role of binding ferric iron and keeping it in solution,thereby controlling the levels of this important metal. Serum transferrin may have a further role in stimulating cell proliferation.

For Research Use Only

A Reliable Research Partner in Life Science and Medicine

Toll-free: 1-888-852-8623

Web: www.elabscience.com

Tel: 1-832-243-6086

Email: techsupport@elabscience.com

Fax: 1-832-243-6017