

# CK-18 Polyclonal Antibody

Catalog Number: D-AB-10166L



**Note:** Centrifuge before opening to ensure complete recovery of vial contents.

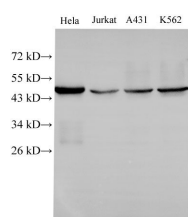
## Description

<b>Reactivity</b>	Human, Mouse, Rat
<b>Immunogen</b>	Recombinant Human Keratin, type I cytoskeletal 18 protein
<b>Host</b>	Rabbit
<b>Isotype</b>	IgG
<b>Purification</b>	Antigen Affinity Purification
<b>Conjugation</b>	Unconjugated
<b>Formulation</b>	PBS with 0.02% sodium azide, 50% glycerol, pH7.3.

## Applications Recommended Dilution

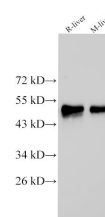
<b>WB</b>	1:500-1:1000
<b>IHC</b>	1:500-1:1000
<b>IF</b>	1:100-1:200

## Data

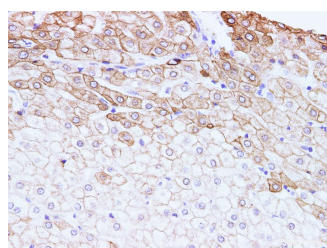


Western Blot analysis of HeLa, Jurkat, A431 and k562 cells using CK-18 Polyclonal Antibody at dilution of 1:500

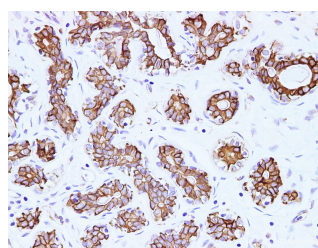
**Observed Mw: 48 kDa**  
**Calculated Mw: 48 kDa**



Western Blot analysis of Rat liver and Mouse liver using CK-18 Polyclonal Antibody at dilution of 1:500



Immunohistochemistry of paraffin-embedded Human liver using CK-18 Polyclonal Antibody at dilution of 1:100



Immunohistochemistry of paraffin-embedded Human breast using CK-18 Polyclonal Antibody at dilution of 1:100

## For Research Use Only

A Reliable Research Partner in Life Science and Medicine

Toll-free: 1-888-852-8623

Web: [www.elabscience.com](http://www.elabscience.com)

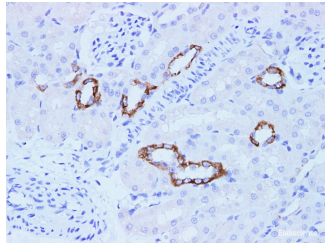
Tel: 1-832-243-6086

Email: [techsupport@elabscience.com](mailto:techsupport@elabscience.com)

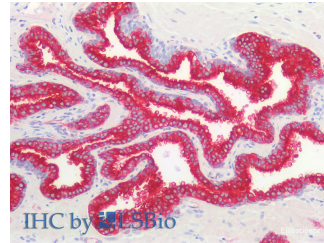
Fax: 1-832-243-6017

# CK-18 Polyclonal Antibody

Catalog Number:D-AB-10166L



Immunohistochemistry of paraffin-embedded Rat kidney using CK-18 Polyclonal Antibody at dilution of 1:100



Immunohistochemistry of paraffin-embedded Human prostate using CK-18 Polyclonal Antibody at dilution of 1:100(Elabscience® Product Detected by Lifespan).

## Preparation & Storage

**Storage** Store at -20°C. Avoid freeze / thaw cycles.

## Background

Cytokeratin 18 (CK18) has a molecular weight of 45 KDa, which is a low molecular weight type A cytokeratin. It is a marker of simple epithelium, including glandular epithelium. The stratified squamous epithelium is generally negative. CK18 is mainly used in the diagnosis of adenocarcinoma.

## For Research Use Only

A Reliable Research Partner in Life Science and Medicine

Toll-free: 1-888-852-8623

Web: [www.elabscience.com](http://www.elabscience.com)

Tel: 1-832-243-6086

Email: [techsupport@elabscience.com](mailto:techsupport@elabscience.com)

Fax: 1-832-243-6017