

Note: Centrifuge before opening to ensure complete recovery of vial contents.

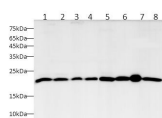
Description

| | |
|---------------------|---|
| Reactivity | Human,Mouse,Rat |
| Immunogen | Recombinant Human BAX Protein expressed by E.coli |
| Host | Rabbit |
| Isotype | IgG |
| Purification | Antigen Affinity Purification |
| Conjugation | Unconjugated |
| Formulation | PBS with 0.02% sodium azide,50% glycerol pH 7.4 |

Applications Recommended Dilution

| | |
|-----------|--------------|
| WB | 1:500-1:1000 |
|-----------|--------------|

Data



Western blot with BAX Polyclonal antibody at dilution of 1:1000.lane 1:MCF-7 whole cell lysate,lane 2:A549 whole cell lysate,lane 3:HepG2 whole cell lysate,lane 4:SH-SY5Y whole cell lysate,lane 5:C2C12 whole cell lysate,lane 6:NIH-3T3 whole cell lysate,lane 7:Raw264.7 whole cell lysate,lane 8:C6 whole cell lysate

Observed Mw:20 kDa

Calculated Mw:4 kDa/12 kDa/15 kDa/18 kDa/19 kDa/21 kDa/24 kDa

Preparation & Storage

Storage Store at -20°C. Avoid freeze / thaw cycles.

Background

The protein encoded by this gene belongs to the BCL2 protein family. BCL2 family members form hetero- or homodimers and act as anti- or pro-apoptotic regulators that are involved in a wide variety of cellular activities. This protein forms a heterodimer with BCL2, and functions as an apoptotic activator. This protein is reported to interact with, and increase the opening of, the mitochondrial voltage-dependent anion channel (VDAC), which leads to the loss in membrane potential and the release of cytochrome c. The expression of this gene is regulated by the tumor suppressor P53 and has been shown to be involved in P53-mediated apoptosis. Multiple alternatively spliced transcript variants, which encode different isoforms, have been reported for this gene.

For Research Use Only

A Reliable Research Partner in Life Science and Medicine

Toll-free: 1-888-852-8623

Web: www.elabscience.com

Tel: 1-832-243-6086

Email: techsupport@elabscience.com

Fax: 1-832-243-6017