

# MYD88 Polyclonal Antibody

Catalog Number:D-AB-10290L



**Note:** Centrifuge before opening to ensure complete recovery of vial contents.

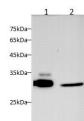
## Description

<b>Reactivity</b>	Human,Mouse,Rat
<b>Immunogen</b>	Recombinant Human MYD88 Protein expressed by E.coli
<b>Host</b>	Rabbit
<b>Isotype</b>	IgG
<b>Purification</b>	Antigen Affinity Purification
<b>Conjugation</b>	Unconjugated
<b>Formulation</b>	PBS with 0.02% sodium azide,50% glycerol pH 7.4

## Applications Recommended Dilution

<b>WB</b>	1:500-1:1000
-----------	--------------

## Data



Western blot with MYD88 Polyclonal antibody at dilution of 1:1000.lane 1:Raw264.7 whole cell lysate,lane 2:Mouse lung,lane 3:Rat lung

**Observed Mw:33kDa**  
**Calculated Mw:33kDa**



Western blot with MYD88 Polyclonal antibody at dilution of 1:600.lane 1:HepG2 whole cell lysate,lane 2:K562 whole cell lysate

## Preparation & Storage

**Storage** Store at -20°C. Avoid freeze / thaw cycles.

## Background

Adapter protein involved in the Toll-like receptor and IL-1 receptor signaling pathway in the innate immune response. Acts via IRAK1,IRAK2,IRF7 and TRAF6,leading to NF-kappa-B activation,cytokine secretion and the inflammatory response. Increases IL-8 transcription. Involved in IL-18-mediated signaling pathway.

## For Research Use Only

A Reliable Research Partner in Life Science and Medicine

Toll-free: 1-888-852-8623

Web: [www.elabscience.com](http://www.elabscience.com)

Tel: 1-832-243-6086

Email: [techsupport@elabscience.com](mailto:techsupport@elabscience.com)

Fax: 1-832-243-6017