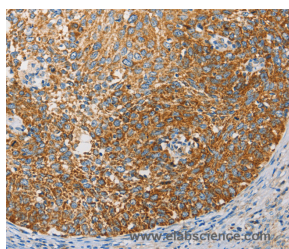


## APOBEC3G Polyclonal Antibody

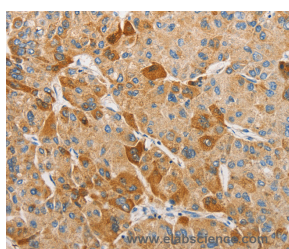
|                     |   |                   |        |
|---------------------|---|-------------------|--------|
| <b>Catalog No.</b>  | E-AB-10817                                  | <b>Reactivity</b> | H      |
| <b>Storage</b>      | Store at -20°C. Avoid freeze / thaw cycles. | <b>Host</b>       | Rabbit |
| <b>Applications</b> | IHC,ELISA                                   | <b>Isotype</b>    | IgG    |

**Note:** Centrifuge before opening to ensure complete recovery of vial contents.

### Images



Immunohistochemistry of paraffin-embedded Human cervical cancer tissue using APOBEC3G Polyclonal Antibody at dilution 1:50



Immunohistochemistry of paraffin-embedded Human liver cancer tissue using APOBEC3G Polyclonal Antibody at dilution 1:50

### Immunogen Information

|                       |   |
|-----------------------|---|
| <b>Immunogen</b>      | Recombinant protein of human APOBEC3G                         |
| <b>Gene Accession</b> | BC024268  |
| <b>Swissprot</b>      | Q9HC16  |
| <b>Synonyms</b>       | A3G,ARCD,ARP9,ARP-9,CEM15,CEM-15,MDS019 ,bK150C2.7,dJ494G10.1 |

### Product Information

|                 |   |
|-----------------|---|
| <b>Buffer</b>   | PBS with 0.05% sodium azide and 50% glycerol, PH7.4 |
| <b>Purify</b>   | Affinity purification                               |
| <b>Dilution</b> | IHC 1:50-1:200                                      |

### Background

This gene is a member of the cytidine deaminase gene family. It is one of seven related genes or pseudogenes found in a cluster, thought to result from gene duplication, on chromosome 22. Members of the cluster encode proteins that are structurally and functionally related to the C to U RNA-editing cytidine deaminase APOBEC1. It is thought that the proteins may be RNA editing enzymes and have roles in growth or cell cycle control. The protein encoded by this gene has been found to be a specific inhibitor of human immunodeficiency virus-1 (HIV-1) infectivity.

#### For Research Use Only

Thank you for your recent purchase.  
 If you would like to learn more about antibodies, please visit [www.elabscience.com](http://www.elabscience.com).

**Focus on your research  
 Service for life science**

Applications:WB-Western Blot IHC-Immunohistochemistry IF-Immunofluorescence IP-Immunoprecipitation FC-Flow cytometry ChIP-Chromatin Immunoprecipitation Reactivity: H-Human R-Rat M-Mouse Mk-Monkey Dg-Dog Ch-Chicken Hm-Hamster Rb-Rabbit Sh-Sheep Pg-Pig Z-Zebrafish X-Xenopus C-Cow.