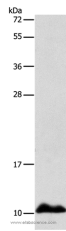


APOC1 Polyclonal Antibody

Catalog No.	E-AB-14587	Reactivity	H
Storage	Store at -20°C. Avoid freeze / thaw cycles.	Host	Rabbit
Applications	WB,ELISA	Isotype	IgG

Note: Centrifuge before opening to ensure complete recovery of vial contents.

Images



Western Blot analysis of Human fetal liver tissue using APOC1 Polyclonal Antibody at dilution of 1:500

Immunogen Information

Immunogen	Recombinant protein of human APOC1
Gene Accession	BC009698
Swissprot	P02654
Synonyms	APO C1,Apo C1,ApoC I,ApoC-IB,APOC1,APOC1B,Apolipoprotein C I,Apolipoprotein C1,Apolipoprotein CI,ApolipoproteinC I

Product Information

Calculated MW	9kDa
Buffer	PBS with 0.05% sodium azide and 50% glycerol, PH7.4
Purify	Affinity purification
Dilution	WB 1:500-1:2000

Background

The protein encoded by this gene is a member of the apolipoprotein C1 family. This gene is expressed primarily in the liver, and it is activated when monocytes differentiate into macrophages. A pseudogene of this gene is located 4 kb downstream in the same orientation, on the same chromosome. This gene is mapped to chromosome 19, where it resides within a apolipoprotein gene cluster. Alternatively spliced transcript variants have been found for this gene, but the biological validity of some variants has not been determined.

For Research Use Only

Thank you for your recent purchase.

If you would like to learn more about antibodies, please visit www.elabscience.com.

**Focus on your research
Service for life science**

Applications:WB-Western Blot IHC-Immunohistochemistry IF-Immunofluorescence IP-Immunoprecipitation FC-Flow cytometry ChIP-Chromatin Immunoprecipitation Reactivity: H-Human R-Rat M-Mouse Mk-Monkey Dg-Dog Ch-Chicken Hm-Hamster Rb-Rabbit Sh-Sheep Pg-Pig Z-Zebrafish X-Xenopus C-Cow.