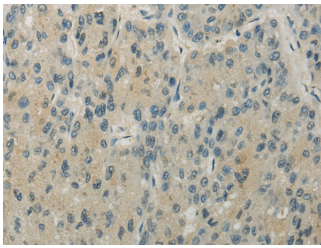


RHO Polyclonal Antibody

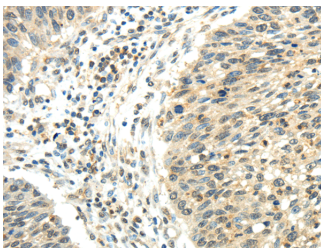
| | | | |
|---------------------|---|-------------------|--------|
| Catalog No. | E-AB-17619 | Reactivity | H |
| Storage | Store at -20°C. Avoid freeze / thaw cycles. | Host | Rabbit |
| Applications | IHC,ELISA | Isotype | IgG |

Note: Centrifuge before opening to ensure complete recovery of vial contents.

Images



Immunohistochemistry of paraffin-embedded Human liver cancer tissue using RHO Polyclonal Antibody at dilution 1:30



Immunohistochemistry of paraffin-embedded Human lung cancer tissue using RHO Polyclonal Antibody at dilution 1:30

Immunogen Information

| | |
|-----------------------|--|
| Immunogen | Synthetic peptide of human RHO |
| Gene Accession | NP_067028 |
| Swissprot | Q7L0Q8 |
| Synonyms | AA48924,Il1rak,IRAK,IRAK-1,Irak1,IRAK1-S,IRAK1,mPLK,Pelle,Pelle homolog,Plpk |

Product Information

| | |
|-----------------|--|
| Buffer | PBS with 0.05% sodium azide, 50% glycerol, PH7.3 |
| Purify | Affinity purification |
| Dilution | IHC 1:20-100, ELISA 1:2000-5000 |

Background

This gene encodes a member of the Rho family of GTPases. This protein can activate PAK1 and JNK1, and can induce filopodium formation and stress fiber dissolution. It may also mediate the effects of WNT1 signaling in the regulation of cell morphology, cytoskeletal organization, and cell proliferation. A non-coding transcript variant of this gene results from naturally occurring read-through transcription between this locus and the neighboring DUSP5P (dual specificity phosphatase 5 pseudogene) locus.

For Research Use Only

Thank you for your recent purchase.
If you would like to learn more about antibodies, please visit www.elabscience.com.

Focus on your research
Service for life science

Applications:WB-Western Blot IHC-Immunohistochemistry IF-Immunofluorescence IP-Immunoprecipitation FC-Flow cytometry ChIP-Chromatin Immunoprecipitation Reactivity: H-Human R-Rat M-Mouse Mk-Monkey Dg-Dog Ch-Chicken Hm-Hamster Rb-Rabbit Sh-Sheep Pg-Pig Z-Zebrafish X-Xenopus C-Cow.