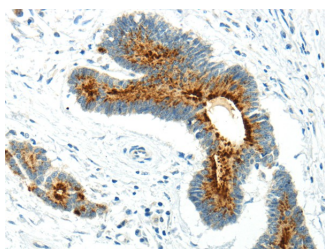


WWOX Polyclonal Antibody

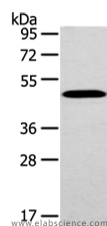
Catalog No.	E-AB-17623	Reactivity	H,M
Storage	Store at -20°C. Avoid freeze / thaw cycles.	Host	Rabbit
Applications	WB,IHC,ELISA	Isotype	IgG

Note: Centrifuge before opening to ensure complete recovery of vial contents.

Images



Immunohistochemistry of paraffin-embedded Human colorectal cancer using WWOX Polyclonal Antibody at dilution of 1/20



Western Blot analysis of Mouse brain tissue using WWOX Polyclonal Antibody at dilution of 1/200

Immunogen Information

Immunogen	Synthetic peptide of human WWOX
Gene Accession	NP_057457
Swissprot	Q9NZC7
Synonyms	IRIDA,Matriptase-2,MTSP 2,MTSP2,PVAE354,TMPRSS 6,TMPRSS6,TMPS6,TMSP 6,TMSP6

Product Information

Calculated MW	47 kDa
Buffer	PBS with 0.05% sodium azide, 50% glycerol, PH7.3
Purify	Affinity purification
Dilution	WB 1:500-2000, IHC 1:20-100, ELISA 1:2000-5000

Background

This gene encodes a member of the short-chain dehydrogenases/reductases (SDR) protein family. This gene spans the FRA16D common chromosomal fragile site and appears to function as a tumor suppressor gene. Expression of the encoded protein is able to induce apoptosis, while defects in this gene are associated with Human, Mouse multiple types of cancer. Disruption of this gene is also associated with autosomal recessive spinocerebellar ataxia 12.

For Research Use Only

Thank you for your recent purchase.
 If you would like to learn more about antibodies, please visit www.elabscience.com.

**Focus on your research
 Service for life science**

Applications:WB-Western Blot IHC-Immunohistochemistry IF-Immunofluorescence IP-Immunoprecipitation FC-Flow cytometry ChIP-Chromatin Immunoprecipitation Reactivity: H-Human R-Rat M-Mouse Mk-Monkey Dg-Dog Ch-Chicken Hm-Hamster Rb-Rabbit Sh-Sheep Pg-Pig Z-Zebrafish X-Xenopus C-Cow.