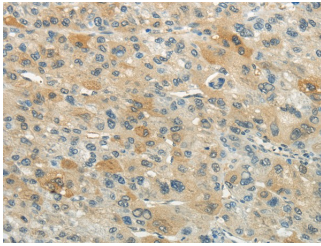


XKR3 Polyclonal Antibody

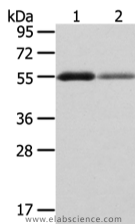
Catalog No.	E-AB-17630	Reactivity	H
Storage	Store at -20°C. Avoid freeze / thaw cycles.	Host	Rabbit
Applications	WB,IHC,ELISA	Isotype	IgG

Note: Centrifuge before opening to ensure complete recovery of vial contents.

Images



Immunohistochemistry of paraffin-embedded Human liver cancer using XKR3 Polyclonal Antibody at dilution of 1/20



Western Blot analysis of Human thyroid cancer and normal stomach tissue using XKR3 Polyclonal Antibody at dilution of 1/200

Immunogen Information

Immunogen	Synthetic peptide of human XKR3
Gene Accession	NP_787074
Swissprot	Q5GH77
Synonyms	BTN6,BTNL11,MGC26137,MOG AluA,MOG AluB,MOG,MOG Ig AluB,MOG_HUMAN,MOGIG2,NRCLP7

Product Information

Calculated MW	53 kDa
Buffer	PBS with 0.05% sodium azide, 50% glycerol, PH7.3
Purify	Affinity purification
Dilution	WB 1:200-1000, IHC 1:10-50, ELISA 1:1000-2000

Background

XKRX (MIM 300684) and XKR3 are homologs of the Kell blood group precursor XK (MIM 314850), which is a putative membrane transporter and a component of the XK/Kell complex of the Kell blood group system (Calenda et al., 2006 [PubMed 16431037]).

For Research Use Only

Thank you for your recent purchase.
 If you would like to learn more about antibodies, please visit www.elabscience.com.

**Focus on your research
 Service for life science**

Applications:WB-Western Blot IHC-Immunohistochemistry IF-Immunofluorescence IP-Immunoprecipitation FC-Flow cytometry ChIP-Chromatin Immunoprecipitation Reactivity: H-Human R-Rat M-Mouse Mk-Monkey Dg-Dog Ch-Chicken Hm-Hamster Rb-Rabbit Sh-Sheep Pg-Pig Z-Zebrafish X-Xenopus C-Cow.