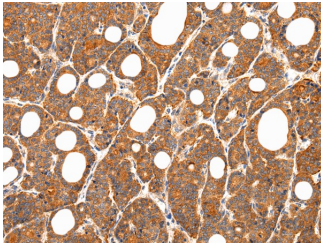


ZNF281 Polyclonal Antibody

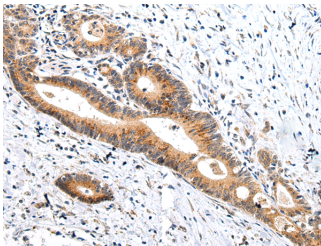
Catalog No.	E-AB-17643	Reactivity	H,M
Storage	Store at -20°C. Avoid freeze / thaw cycles.	Host	Rabbit
Applications	IHC,ELISA	Isotype	IgG

Note: Centrifuge before opening to ensure complete recovery of vial contents.

Images



Immunohistochemistry of paraffin-embedded Human thyroid cancer tissue using ZNF281 Polyclonal Antibody at dilution 1:35



Immunohistochemistry of paraffin-embedded Human colorectal cancer tissue using ZNF281 Polyclonal Antibody at dilution 1:35

Immunogen Information

Immunogen	Synthetic peptide of human ZNF281
Gene Accession	NP_036614
Swissprot	Q9Y2X9
Synonyms	Renal Carcinoma Antigen NY-REN-56,PFK/FBPase 3,IPFK2,PFK2

Product Information

Buffer	PBS with 0.05% sodium azide, 50% glycerol, PH7.3
Purify	Affinity purification
Dilution	IHC 1:25-100, ELISA 1:2000-5000

Background

ZNF281, also known as GC-box-binding zinc finger protein 1, ZBP-99 or ZNP-99 (zinc finger DNA-binding protein 99), is a zinc finger protein that belongs to the Krüppel C2H2-type zinc finger protein family. It is expressed ubiquitously at low levels with predominant expression in kidney, liver, lymphocytes and placenta. ZNF281 localizes to the nucleus and contains four C2H2-type zinc fingers. ZNF281 plays a role in repressing the transcription of a variety of genes including Gastrin and ODC (ornithine decarboxylase). In particular, ZNF281 functions by binding to the G-rich box in the enhancer region of the gene. Upon DNA damage, ZNF281 may become phosphorylated by Atm or ATR.

For Research Use Only

Thank you for your recent purchase.
If you would like to learn more about antibodies, please visit www.elabscience.com.

**Focus on your research
Service for life science**

Applications:WB-Western Blot IHC-Immunohistochemistry IF-Immunofluorescence IP-Immunoprecipitation FC-Flow cytometry ChIP-Chromatin Immunoprecipitation Reactivity: H-Human R-Rat M-Mouse Mk-Monkey Dg-Dog Ch-Chicken Hm-Hamster Rb-Rabbit Sh-Sheep Pg-Pig Z-Zebrafish X-Xenopus C-Cow.