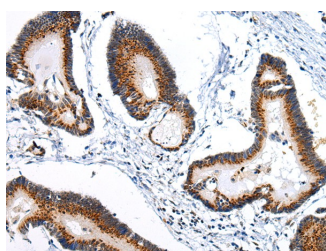


ARFGAP2 Polyclonal Antibody

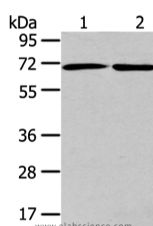
Catalog No.	E-AB-17647	Reactivity	H,M,R
Storage	Store at -20°C. Avoid freeze / thaw cycles.	Host	Rabbit
Applications	WB,IHC,ELISA	Isotype	IgG

Note: Centrifuge before opening to ensure complete recovery of vial contents.

Images



Immunohistochemistry of paraffin-embedded Human colorectal cancer using ARFGAP2 Polyclonal Antibody at dilution of 1/25



Western Blot analysis of A431 and hela cell using ARFGAP2 Polyclonal Antibody at dilution of 1/200

Immunogen Information

Immunogen	Synthetic peptide of human ARFGAP2
Gene Accession	NP_115765
Swissprot	Q8N6H7
Synonyms	SCGB2A1,LIPHC,MGB2,UGB3,Mammaglobin-B,La cryglobin,Lipophilin-C,Mammaglobin-2,Secretoglobin family 2A member 1

Product Information

Calculated MW	57 kDa
Buffer	PBS with 0.05% sodium azide, 50% glycerol, PH7.3
Purify	Affinity purification
Dilution	WB 1:500-2000, IHC 1:20-100, ELISA 1:2000-5000

Background

ZNF289 (zinc finger protein 289), also known as ARFGAP2 (ADP-ribosylation factor GTPase activating protein 2), IRZ, Zfp289 or Nbla10535, functions as a GTPase-activating protein (GAP) for ARF family proteins. Localizing to the cytoplasmic side of the Golgi apparatus, ZNF289 contains one ARF-GAP domain and is found associated with COP-I-coated vesicles.

For Research Use Only

Thank you for your recent purchase.
 If you would like to learn more about antibodies, please visit www.elabscience.com.

**Focus on your research
 Service for life science**

Applications:WB-Western Blot IHC-Immunohistochemistry IF-Immunofluorescence IP-Immunoprecipitation FC-Flow cytometry ChIP-Chromatin Immunoprecipitation Reactivity: H-Human R-Rat M-Mouse Mk-Monkey Dg-Dog Ch-Chicken Hm-Hamster Rb-Rabbit Sh-Sheep Pg-Pig Z-Zebrafish X-Xenopus C-Cow.