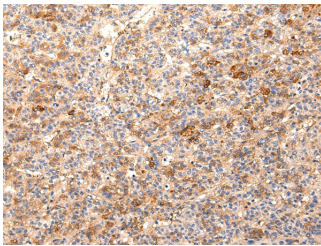


ZNF365 Polyclonal Antibody

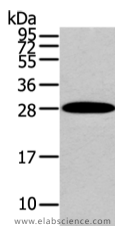
Catalog No.	E-AB-17651	Reactivity	H
Storage	Store at -20°C. Avoid freeze / thaw cycles.	Host	Rabbit
Applications	WB,IHC,ELISA	Isotype	IgG

Note: Centrifuge before opening to ensure complete recovery of vial contents.

Images



Immunohistochemistry of paraffin-embedded Human liver cancer using ZNF365 Polyclonal Antibody at dilution of 1/20



Western Blot analysis of Human liver cancer tissue using ZNF365 Polyclonal Antibody at dilution of 1/200

Immunogen Information

Immunogen	Synthetic peptide of human ZNF365
Gene Accession	NP_955524
Swissprot	Q70YC4
Synonyms	ARTD13,FLB6421,PARP13,ZAP,ZC3H2,ZC3HAV1,Zc3hav1,ZC3HDC 2,ZC3HDC2,ZCCHV

Product Information

Calculated MW	24 kDa
Buffer	PBS with 0.05% sodium azide, 50% glycerol, PH7.3
Purify	Affinity purification
Dilution	WB 1:500-2000, IHC 1:25-100, ELISA 1:2000-5000

Background

This gene encodes several isoforms which have different expression patterns and functions. Mutation in this gene is associated with uric acid nephrolithiasis (UAN). Alternatively spliced variants, encoding distinct proteins, have been identified.

For Research Use Only

Thank you for your recent purchase.
 If you would like to learn more about antibodies, please visit www.elabscience.com.

Focus on your research Service for life science

Applications:WB-Western Blot IHC-Immunohistochemistry IF-Immunofluorescence IP-Immunoprecipitation FC-Flow cytometry ChIP-Chromatin Immunoprecipitation Reactivity: H-Human R-Rat M-Mouse Mk-Monkey Dg-Dog Ch-Chicken Hm-Hamster Rb-Rabbit Sh-Sheep Pg-Pig Z-Zebrafish X-Xenopus C-Cow.