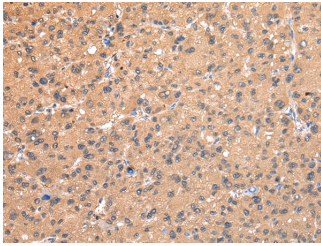


AP2A1 Polyclonal Antibody

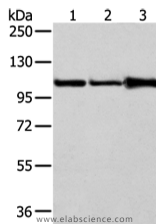
Catalog No.	E-AB-17662	Reactivity	H,M
Storage	Store at -20°C. Avoid freeze / thaw cycles.	Host	Rabbit
Applications	WB,IHC,ELISA	Isotype	IgG

Note: Centrifuge before opening to ensure complete recovery of vial contents.

Images



Immunohistochemistry of paraffin-embedded Human liver cancer using AP2A1 Polyclonal Antibody at dilution of 1/20



Western Blot analysis of A431, 231 and NIH/3T3 cell using AP2A1 Polyclonal Antibody at dilution of 1/250

Immunogen Information

Immunogen	Synthetic peptide of human AP2A1
Gene Accession	NP_055018
Swissprot	O95782
Synonyms	BP 8,CBF-A,NSEP 1,NSEP1,YB 1,YB-1,YBOX1,YBX 1,ybx1

Product Information

Calculated MW	108 kDa
Buffer	PBS with 0.05% sodium azide, 50% glycerol, PH7.3
Purify	Affinity purification
Dilution	WB 1:500-2000, IHC 1:25-100, ELISA 1:2000-5000

Background

This gene encodes the alpha 1 adaptin subunit of the adaptor protein 2 (AP-2) complex found in clathrin coated vesicles. The AP-2 complex is a heterotetramer consisting of two large adaptins (alpha or beta), a medium adaptin (mu), and a small adaptin (sigma). The complex is part of the protein coat on the cytoplasmic face of coated vesicles which links clathrin to receptors in vesicles. Alternative splicing of this gene results in two transcript variants encoding two different isoforms.

For Research Use Only

Thank you for your recent purchase.
If you would like to learn more about antibodies, please visit www.elabscience.com.

**Focus on your research
Service for life science**

Applications:WB-Western Blot IHC-Immunohistochemistry IF-Immunofluorescence IP-Immunoprecipitation FC-Flow cytometry ChIP-Chromatin Immunoprecipitation Reactivity: H-Human R-Rat M-Mouse Mk-Monkey Dg-Dog Ch-Chicken Hm-Hamster Rb-Rabbit Sh-Sheep Pg-Pig Z-Zebrafish X-Xenopus C-Cow.