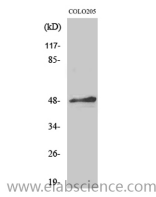


TFAP2A/B Polyclonal Antibody

Catalog No.	E-AB-30516	Reactivity	H,M,R
Storage	Store at -20°C. Avoid freeze / thaw cycles.	Host	Rabbit
Applications	WB,IHC-p,ELISA	Isotype	IgG

Note: Centrifuge before opening to ensure complete recovery of vial contents.

Images



Western Blot analysis of COLO205 cells with TFAP2A/B Polyclonal Antibody

Immunogen Information

Immunogen	Synthesized peptide derived from the C-terminal region of human AP-2 α / β
Swissprot	P05549,Q92481
Synonyms	TFAP2A,AP2TF,TFAP2,Transcription factor AP-2-alpha,AP2-alpha,AP-2 transcription factor,Activating enhancer-binding protein 2-alpha,Activator protein 2,AP-2,TFAP2B,Transcription factor AP-2-beta,AP2-beta,Activating enhancer-bind

Product Information

Calculated MW	48kDa
Observed MW	49kDa
Buffer	PBS with 0.02% sodium azide,0.5% BSA and 50% glycerol pH 7.4.
Purify	Affinity purification
Dilution	WB 1:500-1:2000, IHC 1:100-1:300, ELISA 1:10000

Background

The AP2 proteins are normally expressed in ectodermally derived vertebrate tissues where they are necessary for normal growth and development. The factors have also been implicated in the control of cell proliferation, viral transformation, and oncogenesis. AP2 seems to play an important role in human breast cancer. AP2 alpha is the only AP2 protein required for early morphogenesis of the lens vesicle. AP2 beta appears to be required for normal face and limb development and for proper terminal differentiation and function of renal tubular epithelia

For Research Use Only

Thank you for your recent purchase.
If you would like to learn more about antibodies, please visit www.elabscience.com.

**Focus on your research
Service for life science**

Applications:WB-Western Blot IHC-Immunohistochemistry IF-Immunofluorescence IP-Immunoprecipitation FC-Flow cytometry ChIP-Chromatin Immunoprecipitation Reactivity: H-Human R-Rat M-Mouse Mk-Monkey Dg-Dog Ch-Chicken Hm-Hamster Rb-Rabbit Sh-Sheep Pg-Pig Z-Zebrafish X-Xenopus C-Cow.