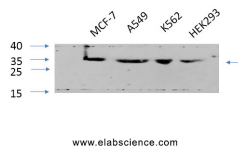


## CDK2 Polyclonal Antibody

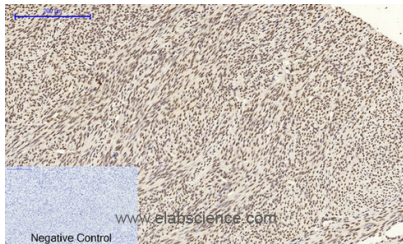
<b>Catalog No.</b>	E-AB-30865	<b>Reactivity</b>	H,M,R
<b>Storage</b>	Store at -20°C. Avoid freeze / thaw cycles.	<b>Host</b>	Rabbit
<b>Applications</b>	WB,IHC-p,IF,ELISA	<b>Isotype</b>	IgG

**Note:** Centrifuge before opening to ensure complete recovery of vial contents.

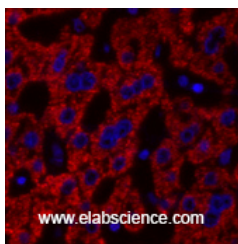
### Images



Western Blot analysis of various cells using Cdk2 Polyclonal Antibody at dilution of 1:1000.



Immunohistochemistry of paraffin-embedded Human uterus tissue using Cdk2 Polyclonal Antibody at dilution of 1:200.



Immunofluorescence analysis of Human liver tissue using Cdk2 Polyclonal Antibody at dilution of 1:200.

### Immunogen Information

<b>Immunogen</b>	Synthesized peptide derived from the C-terminal region of human Cdk2
<b>Swissprot</b>	P24941
<b>Synonyms</b>	CDK2,CDKN2,Cyclin-dependent kinase 2,Cell division protein kinase 2,p33 protein kinase

### Product Information

<b>Calculated MW</b>	34kDa
<b>Observed MW</b>	32kDa
<b>Buffer</b>	PBS with 0.02% sodium azide, 0.5% BSA and 50% glycerol, pH7.4
<b>Purify</b>	Affinity purification
<b>Dilution</b>	WB 1:500-1:2000, IHC 1:100-1:300, IF 1:200-1:1000, ELISA 1:20000

### Background

Involved in the control of the cell cycle. Interacts with cyclins A, B1, B3, D, or E. Activity of CDK2 is maximal during S phase and G2.

#### For Research Use Only

Thank you for your recent purchase.  
 If you would like to learn more about antibodies, please visit [www.elabscience.com](http://www.elabscience.com).

#### Focus on your research Service for life science

Applications:WB-Western Blot IHC-Immunohistochemistry IF-Immunofluorescence IP-Immunoprecipitation FC-Flow cytometry ChIP-Chromatin Immunoprecipitation Reactivity: H-Human R-Rat M-Mouse Mk-Monkey Dg-Dog Ch-Chicken Hm-Hamster Rb-Rabbit Sh-Sheep Pg-Pig Z-Zebrafish X-Xenopus C-Cow.