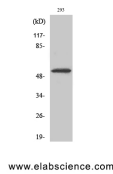


CDK8 Polyclonal Antibody

| | | | |
|---------------------|---|-------------------|--------|
| Catalog No. | E-AB-30870 | Reactivity | H,M |
| Storage | Store at -20°C. Avoid freeze / thaw cycles. | Host | Rabbit |
| Applications | WB,IHC-p,ELISA | Isotype | IgG |

Note: Centrifuge before opening to ensure complete recovery of vial contents.

Images



Western Blot analysis of 293 cells using Cdk8 Polyclonal Antibody at dilution of 1:500.

Immunogen Information

| | |
|------------------|---|
| Immunogen | Synthesized peptide derived from the N-terminal region of human Cdk8 |
| Swissprot | P49336 |
| Synonyms | CDK8,Cyclin-dependent kinase 8,Cell division protein kinase 8,Mediator complex subunit CDK8,Mediator of RNA polymerase II transcription subunit CDK8,Protein kinase K35 |

Product Information

| | |
|----------------------|---|
| Calculated MW | 53kDa |
| Observed MW | 53kDa |
| Buffer | PBS with 0.02% sodium azide, 0.5% BSA and 50% glycerol, pH7.4 |
| Purify | Affinity purification |
| Dilution | WB 1:500-1:2000, IHC 1:100-1:300, ELISA 1:10000 |

Background

Component of the Mediator complex, a coactivator involved in regulated gene transcription of nearly all RNA polymerase II-dependent genes. Mediator functions as a bridge to convey information from gene-specific regulatory proteins to the basal RNA polymerase II transcription machinery. Mediator is recruited to promoters by direct interactions with regulatory proteins and serves as a scaffold for the assembly of a functional preinitiation complex with RNA polymerase II and the general transcription factors. Phosphorylates the CTD (C-terminal domain) of the large subunit of RNA polymerase II (RNAP II), which may inhibit the formation of a transcription initiation complex. Phosphorylates CCNH leading to down-regulation of the TFIID complex and transcriptional repression. Recruited through interaction with MAML1 to hyperphosphorylate the intracellular domain of NOTCH, leading to its degradation.

For Research Use Only

Thank you for your recent purchase.

If you would like to learn more about antibodies, please visit www.elabscience.com.

**Focus on your research
Service for life science**

Applications:WB-Western Blot IHC-Immunohistochemistry IF-Immunofluorescence IP-Immunoprecipitation FC-Flow cytometry ChIP-Chromatin Immunoprecipitation Reactivity: H-Human R-Rat M-Mouse Mk-Monkey Dg-Dog Ch-Chicken Hm-Hamster Rb-Rabbit Sh-Sheep Pg-Pig Z-Zebrafish X-Xenopus C-Cow.