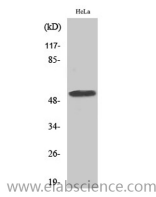


CEP55 Polyclonal Antibody

Catalog No.	E-AB-30883	Reactivity	H
Storage	Store at -20°C. Avoid freeze / thaw cycles.	Host	Rabbit
Applications	WB,IHC-p,ELISA	Isotype	IgG

Note: Centrifuge before opening to ensure complete recovery of vial contents.

Images



Western Blot analysis of HeLa cells with CEP55 Polyclonal Antibody.

Immunogen Information

Immunogen	Synthesized peptide derived from the Internal region of human CEP55
Swissprot	Q53EZ4
Synonyms	CEP55,C10orf3,URCC6,Centrosomal protein of 55 kDa,Cep55,Up-regulated in colon cancer 6

Product Information

Calculated MW	54kDa
Observed MW	54kDa
Buffer	PBS with 0.02% sodium azide,0.5% BSA and 50% glycerol pH 7.4.
Purify	Affinity purification
Dilution	WB 1:500-1:2000, IHC 1:100-1:300, ELISA 1:40000

Background

Centrosomal protein of 55 kDa is a protein that in humans is encoded by the CEP55 gene. CEP55 is a mitotic phosphoprotein that plays a key role in cytokinesis, the final stage of cell division. Interacts (phosphorylated on Ser-425 and Ser-428) with PLK1. Interacts with AKAP9; the interaction occurs in interphase and is lost upon mitotic entry. Interacts with PCNT; the interaction occurs in interphase and is lost upon mitotic entry. Interacts with PDCD6IP; the interaction is direct; CEP55 binds PDCD6IP in a 2:1 stoichiometry; PDCD6IP competes with TSG101 for the same binding site.

For Research Use Only

Thank you for your recent purchase.

If you would like to learn more about antibodies, please visit www.elabscience.com.

**Focus on your research
Service for life science**

Applications:WB-Western Blot IHC-Immunohistochemistry IF-Immunofluorescence IP-Immunoprecipitation FC-Flow cytometry ChIP-Chromatin Immunoprecipitation Reactivity: H-Human R-Rat M-Mouse Mk-Monkey Dg-Dog Ch-Chicken Hm-Hamster Rb-Rabbit Sh-Sheep Pg-Pig Z-Zebrafish X-Xenopus C-Cow.