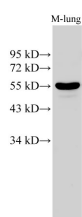


CK-8 Polyclonal Antibody

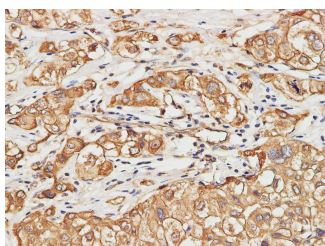
Catalog No.	E-AB-40213	Reactivity	H,M
Storage	Store at -20°C. Avoid freeze / thaw cycles.	Host	Rabbit
Applications	WB,IHC	Isotype	IgG

Note: Centrifuge before opening to ensure complete recovery of vial contents.

Images



Western Blot analysis of Mouse lung using CK-8 Polyclonal Antibody at dilution of 1:500



Immunohistochemistry of paraffin-embedded Human liver cancer using CK-8 Polyclonal Antibody at dilution of 1:200

Immunogen Information

Immunogen	Recombinant Human Keratin, type II cytoskeletal 8 protien
Swissprot	P05787
Synonyms	CARD2,CK 8,CK-8,CK8,CYK8,CYKER,Cytokeratin endo A,Cytokeratin-8,DreK8,EndoA

Product Information

Calculated MW	54,57 kDa
Observed MW	57 kDa
Buffer	PBS with 0.05% Proclin300 and 50% glycerol, pH7.4.
Purify	Affinity Purification
Dilution	WB 1:500-1:1000 IHC 1:100-1:400

Background

Cytokeratin 8 (CK8) has a molecular weight of 52.5 KDa, which belongs to the HMW (high molecular weight) B-type Cytokeratin. CK8 is mainly marked on non-squamous epithelium, thus can be used for the diagnosis of adenocarcinoma and ductal carcinoma. Generally, CK8 is not expressed in squamous cell carcinoma. It is reported that hepatocellular carcinoma mainly express CK8 and CK18.

For Research Use Only

Thank you for your recent purchase.
 If you would like to learn more about antibodies, please visit www.elabscience.com.

**Focus on your research
 Service for life science**

Applications:WB-Western Blot IHC-Immunohistochemistry IF-Immunofluorescence IP-Immunoprecipitation FC-Flow cytometry ChIP-Chromatin Immunoprecipitation Reactivity: H-Human R-Rat M-Mouse Mk-Monkey Dg-Dog Ch-Chicken Hm-Hamster Rb-Rabbit Sh-Sheep Pg-Pig Z-Zebrafish X-Xenopus C-Cow.