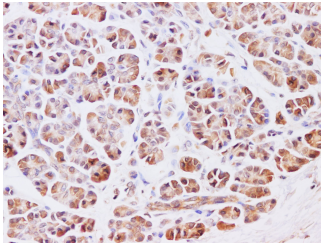


## HSF27 Polyclonal Antibody

<b>Catalog No.</b>	E-AB-40214	<b>Reactivity</b>	H
<b>Storage</b>	Store at -20°C. Avoid freeze / thaw cycles.	<b>Host</b>	Rabbit
<b>Applications</b>	IHC	<b>Isotype</b>	IgG

**Note:** Centrifuge before opening to ensure complete recovery of vial contents.

### Images



Immunohistochemistry of paraffin-embedded Human pancreas using HSF27 Polyclonal Antibody at dilution of 1:200

### Immunogen Information

<b>Immunogen</b>	Recombinant Human CDK5 regulatory subunit-associated protein 3 protein
<b>Swissprot</b>	Q96JB5
<b>Synonyms</b>	C53,CDK5 activator binding protein C53,Cdk5rap3,CK5P3,HSF 27, HSF27,IC53,LZAP, MST016,OK/SWcl.114,PP1553,Protein HSF-27

### Product Information

<b>Buffer</b>	PBS with 0.05% Proclin300 and 50% glycerol, pH7.4.
<b>Purify</b>	Affinity purification
<b>Dilution</b>	IHC 1:100-1:400

### Background

This gene encodes a protein that has been reported to function in signaling pathways governing transcriptional regulation and cell cycle progression. It may play a role in tumorigenesis and metastasis. A pseudogene of this gene is located on the long arm of chromosome 20. Alternative splicing results in multiple transcript variants that encode different isoforms.

#### For Research Use Only

Thank you for your recent purchase.

If you would like to learn more about antibodies, please visit [www.elabscience.com](http://www.elabscience.com).

**Focus on your research  
Service for life science**

Applications:WB-Western Blot IHC-Immunohistochemistry IF-Immunofluorescence IP-Immunoprecipitation FC-Flow cytometry ChIP-Chromatin Immunoprecipitation Reactivity: H-Human R-Rat M-Mouse Mk-Monkey Dg-Dog Ch-Chicken Hm-Hamster Rb-Rabbit Sh-Sheep Pg-Pig Z-Zebrafish X-Xenopus C-Cow.