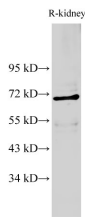


## AIFM1 Polyclonal Antibody

<b>Catalog No.</b>	E-AB-40255	<b>Reactivity</b>	R
<b>Storage</b>	Store at -20°C. Avoid freeze / thaw cycles.	<b>Host</b>	Rabbit
<b>Applications</b>	WB	<b>Isotype</b>	IgG

**Note:** Centrifuge before opening to ensure complete recovery of vial contents.

### Images



Western Blot analysis of Rat kidney using AIFM1 Polyclonal Antibody at dilution of 1:500

### Immunogen Information

<b>Immunogen</b>	Recombinant Rat Apoptosis-inducing factor 1, mitochondrial protein
<b>Swissprot</b>	Q9JM53
<b>Synonyms</b>	AIFM1, Programmed cell death protein 8 mitochondrial

### Product Information

<b>Calculated MW</b>	67 kDa
<b>Observed MW</b>	67 kDa
<b>Buffer</b>	PBS with 0.05% Proclin300 and 50% glycerol, pH7.4.
<b>Purify</b>	Antigen Affinity Purification
<b>Dilution</b>	WB 1:500-1:1000

### Background

This gene encodes a flavoprotein essential for nuclear disassembly in apoptotic cells, and it is found in the mitochondrial intermembrane space in healthy cells. Induction of apoptosis results in the translocation of this protein to the nucleus where it affects chromosome condensation and fragmentation. In addition, this gene product induces mitochondria to release the apoptogenic proteins cytochrome c and caspase-9. Mutations in this gene cause combined oxidative phosphorylation deficiency 6, which results in a severe mitochondrial encephalomyopathy. Alternative splicing results in multiple transcript variants. A related pseudogene has been identified on chromosome 10.

#### For Research Use Only

Thank you for your recent purchase.  
 If you would like to learn more about antibodies, please visit [www.elabscience.com](http://www.elabscience.com).

**Focus on your research  
 Service for life science**

Applications: WB-Western Blot IHC-Immunohistochemistry IF-Immunofluorescence IP-Immunoprecipitation FC-Flow cytometry ChIP-Chromatin Immunoprecipitation Reactivity: H-Human R-Rat M-Mouse Mk-Monkey Dg-Dog Ch-Chicken Hm-Hamster Rb-Rabbit Sh-Sheep Pg-Pig Z-Zebrafish X-Xenopus C-Cow.