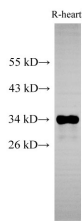


## Cytochrome c1 Polyclonal Antibody

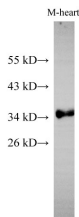
<b>Catalog No.</b>	E-AB-40271	<b>Reactivity</b>	H,M,R
<b>Storage</b>	Store at -20°C. Avoid freeze / thaw cycles.	<b>Host</b>	Rabbit
<b>Applications</b>	WB,IHC	<b>Isotype</b>	IgG

**Note:** Centrifuge before opening to ensure complete recovery of vial contents.

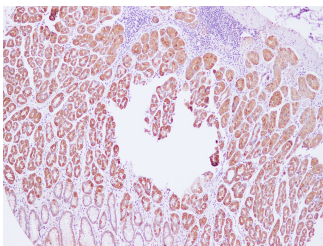
### Images



Western Blot analysis of Rat heart using Cytochrome c1 Polyclonal Antibody at dilution of 1:500



Western Blot analysis of Mouse heart using Cytochrome c1 Polyclonal Antibody at dilution of 1:500



Immunohistochemistry of paraffin-embedded Human stomach using Cytochrome c1 Polyclonal Antibody at dilution of 1:100(100×)

### Immunogen Information

<b>Immunogen</b>	Recombinant Mouse Cytochrome c1, heme protein, mitochondrial protein
<b>GeneID</b>	66445
<b>Swissprot</b>	Q9D0M3
<b>Synonyms</b>	Complex III subunit 4,Complex III subunit IV,UQCR4

### Product Information

<b>Calculated MW</b>	35,29 kDa
<b>Observed MW</b>	34 kDa
<b>Buffer</b>	PBS with 0.05% Proclin300 and 50% glycerol, pH7.4.
<b>Purify</b>	Antigen Affinity Purification
<b>Dilution</b>	WB 1:500-1:1000 IHC 1:100-1:200

### Background

This gene encodes a subunit of the cytochrome bc1 complex, which plays an important role in the mitochondrial respiratory chain by transferring electrons from the Rieske iron-sulfur protein to cytochrome c. Mutations in this gene may cause mitochondrial complex III deficiency, nuclear type 6.

#### For Research Use Only

Thank you for your recent purchase.  
 If you would like to learn more about antibodies, please visit [www.elabscience.com](http://www.elabscience.com).

**Focus on your research  
 Service for life science**

Applications:WB-Western Blot IHC-Immunohistochemistry IF-Immunofluorescence IP-Immunoprecipitation FC-Flow cytometry ChIP-Chromatin Immunoprecipitation Reactivity: H-Human R-Rat M-Mouse Mk-Monkey Dg-Dog Ch-Chicken Hm-Hamster Rb-Rabbit Sh-Sheep Pg-Pig Z-Zebrafish X-Xenopus C-Cow.