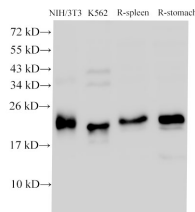


## CDK4 Polyclonal Antibody

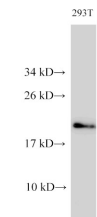
<b>Catalog No.</b>	E-AB-40286	<b>Reactivity</b>	H,M,R
<b>Storage</b>	Store at -20°C. Avoid freeze / thaw cycles.	<b>Host</b>	Rabbit
<b>Applications</b>	WB,IHC	<b>Isotype</b>	IgG

**Note:** Centrifuge before opening to ensure complete recovery of vial contents.

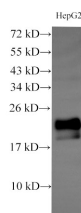
### Images



Western Blot analysis of NIH/3T3, K562 cells, Rat spleen and Rat stomach using CDK4 Polyclonal Antibody at dilution of 1:1000



Western Blot analysis of 293T cells using CDK4 Polyclonal Antibody at dilution of 1:1000



Western Blot analysis of HepG2 cells using CDK4 Polyclonal Antibody at dilution of 1:1000

### Immunogen Information

<b>Immunogen</b>	Recombinant Human Cyclin-dependent kinase 4 protein
<b>GeneID</b>	1019
<b>Swissprot</b>	P11802
<b>Synonyms</b>	Cdk 4,cdk4,CDK4 protein,CDK4,MGC14458,p34 cdk4,PSK J3,PSK-J3

### Product Information

<b>Calculated MW</b>	34,21 kDa
<b>Observed MW</b>	21 kDa
<b>Buffer</b>	PBS with 0.05% Proclin300 and 50% glycerol, pH7.4.
<b>Purify</b>	Antigen Affinity Purification
<b>Dilution</b>	WB 1:1000-1:2000 IHC 1:100-1:300

### Background

The protein encoded by this gene is a member of the Ser/Thr protein kinase family. This protein is highly similar to the gene products of *S. cerevisiae* cdc28 and *S. pombe* cdc2. It is a catalytic subunit of the protein kinase complex that is important for cell cycle G1 phase progression. The activity of this kinase is restricted to the G1-S phase, which is controlled by the regulatory subunits D-type cyclins and CDK inhibitor p16(INK4a). This kinase was shown to be responsible for the phosphorylation of retinoblastoma gene product (Rb). Mutations in this gene as well as in its related proteins including D-type cyclins, p16(INK4a) and Rb were all found to be associated with tumorigenesis of a variety of cancers. Multiple polyadenylation sites of this gene have been reported.

### For Research Use Only

Thank you for your recent purchase.  
 If you would like to learn more about antibodies, please visit [www.elabscience.com](http://www.elabscience.com).

**Focus on your research  
 Service for life science**

Applications:WB-Western Blot IHC-Immunohistochemistry IF-Immunofluorescence IP-Immunoprecipitation FC-Flow cytometry ChIP-Chromatin Immunoprecipitation Reactivity: H-Human R-Rat M-Mouse Mk-Monkey Dg-Dog Ch-Chicken Hm-Hamster Rb-Rabbit Sh-Sheep Pg-Pig Z-Zebrafish X-Xenopus C-Cow.