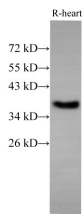


## EpCAM Polyclonal Antibody

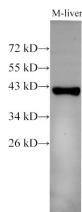
|                     |   |                   |        |
|---------------------|---|-------------------|--------|
| <b>Catalog No.</b>  | E-AB-40300                                  | <b>Reactivity</b> | H,M,R  |
| <b>Storage</b>      | Store at -20°C. Avoid freeze / thaw cycles. | <b>Host</b>       | Rabbit |
| <b>Applications</b> | WB,IHC                                      | <b>Isotype</b>    | IgG    |

**Note:** Centrifuge before opening to ensure complete recovery of vial contents.

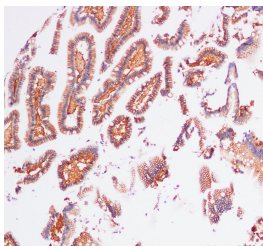
### Images



Western Blot analysis of Rat Heart using EpCAM Polyclonal Antibody at dilution of 1:500



Western Blot analysis of Mouse liver using EpCAM Polyclonal Antibody at dilution of 1:500



Immunohistochemistry of paraffin-embedded Human Duodenum using EpCAM Polyclonal Antibody at dilution of 1:100(100x)

### Immunogen Information

|                  |   |
|------------------|---|
| <b>Immunogen</b> | Recombinant Mouse Epithelial cell adhesion molecule protein   |
| <b>GeneID</b>    | 17075   |
| <b>Swissprot</b> | Q99JW5  |
| <b>Synonyms</b>  | AUA1,CD326,CD326 antigen,CO 17A,CO17 1A,CO17A,DIAR5,EGP 2,EGP,EGP2,EGP314,EGP40,Ep CAM,Ep-CAM,EPCAM,EPCAM,ESA,GA733 1,GA733 2,GA733-2,M1S 1,M1S2,M4S1 |

### Product Information

|                      |  |
|----------------------|--|
| <b>Calculated MW</b> | 35,40kDa   |
| <b>Observed MW</b>   | 35,40kDa   |
| <b>Buffer</b>        | PBS with 0.05% Proclin300 and 50% glycerol, pH7.4. |
| <b>Purify</b>        | Antigen Affinity Purification                      |
| <b>Dilution</b>      | WB 1:500-1:1000                                    |

### Background

Epithelial cell adhesion molecule (EpCAM,CD326) is a type I transmembrane glycoprotein that functions as a homophilic, epithelial-specific intercellular cell-adhesion molecule. In addition to cell adhesion, EpCAM is also involved in cellular signaling, cell migration, proliferation, and differentiation. EpCAM is highly expressed on most carcinomas and therefore of potential use as a diagnostic and prognostic marker for a variety of carcinomas, and has become a therapeutic target.

### For Research Use Only

Thank you for your recent purchase.  
 If you would like to learn more about antibodies, please visit [www.elabscience.com](http://www.elabscience.com).

**Focus on your research  
 Service for life science**

Applications:WB-Western Blot IHC-Immunohistochemistry IF-Immunofluorescence IP-Immunoprecipitation FC-Flow cytometry ChIP-Chromatin Immunoprecipitation Reactivity: H-Human R-Rat M-Mouse Mk-Monkey Dg-Dog Ch-Chicken Hm-Hamster Rb-Rabbit Sh-Sheep Pg-Pig Z-Zebrafish X-Xenopus C-Cow.