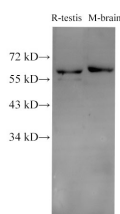


c-SRC Polyclonal Antibody

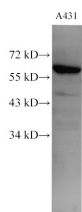
Catalog No.	E-AB-40318	Reactivity	H,M,R
Storage	Store at -20°C. Avoid freeze / thaw cycles.	Host	Rabbit
Applications	WB,IHC	Isotype	IgG

Note: Centrifuge before opening to ensure complete recovery of vial contents.

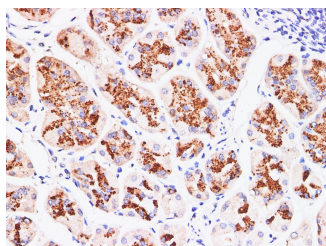
Images



Western Blot analysis of Rat testis and Mouse brain using c-SRC Polyclonal Antibody at dilution of 1:1000.



Western Blot analysis of A431 using c-SRC Polyclonal Antibody at dilution of 1:1000.



Immunohistochemistry of paraffin-embedded Human stomach cancer using c-SRC Polyclonal Antibody at dilution of 1:200.

Immunogen Information

Immunogen	Recombinant Human Proto-oncogene tyrosine-protein kinase Src protein
GeneID	6714
Swissprot	P12931
Synonyms	ASV,Avian sarcoma virus,c SRC,v src sarcoma (Schmidt Rupp A 2) viral oncogene homolog avian

Product Information

Calculated MW	60 kDa
Observed MW	60 kDa
Buffer	PBS with 0.05% Proclin300 and 50% glycerol, pH7.4.
Purify	Antigen Affinity Purification
Dilution	WB 1:1000-1:2000 IHC 1:100-1:300

Background

SRC,also named as SRC1 and p60-Src,belongs to the protein kinase superfamily,Tyr protein kinase family and SRC subfamily. It is a non-receptor protein tyrosine kinase that plays pivotal roles in numerous cellular processes such as proliferation,migration,and transformation. In concert with PTK2B,SRC plays an important role in osteoclastic bone resorption. It promotes energy production in osteoclasts by activating mitochondrial cytochrome C oxidase.

For Research Use Only

Thank you for your recent purchase.
 If you would like to learn more about antibodies,please visit www.elabscience.com.

**Focus on your research
 Service for life science**

Applications:WB-Western Blot IHC-Immunohistochemistry IF-Immunofluorescence IP-Immunoprecipitation FC-Flow cytometry ChIP-Chromatin Immunoprecipitation Reactivity: H-Human R-Rat M-Mouse Mk-Monkey Dg-Dog Ch-Chicken Hm-Hamster Rb-Rabbit Sh-Sheep Pg-Pig Z-Zebrafish X-Xenopus C-Cow.